

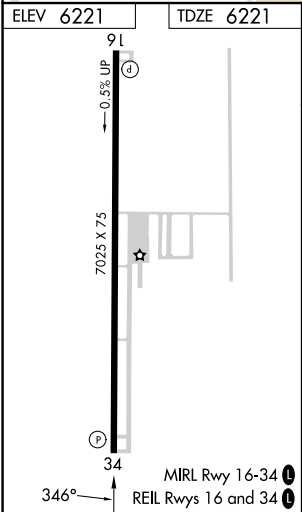
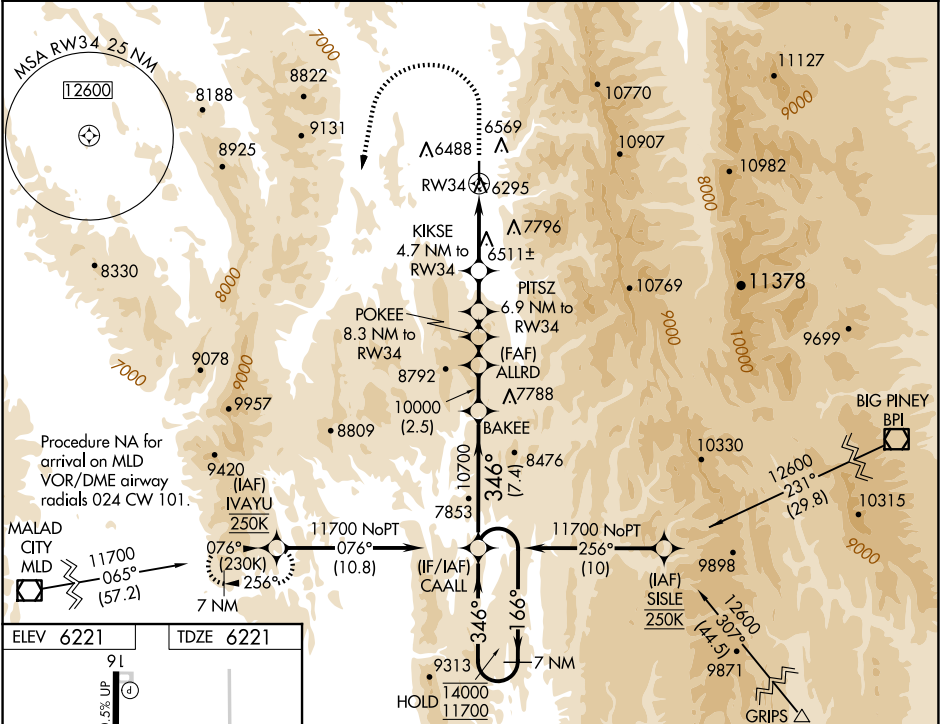
APP CRS	Rwy Idg	7025
346°	TDZE	6221
	Apt Elev	6221

RNAV (GPS) RWY 34

AFTON LINCOLN COUNTY/GENERAL BOYD L EDDINS FLD (AFO)

RNP APCH - GPS.	MISSED APPROACH: (Do not exceed 200K until IVAYU) Climb to 8080 then climbing left turn to 11700 direct IVAYU and hold. *Missed approach requires minimum climb of 364 feet per NM to 8900.
<div><div>▼</div><div>NA</div><div>-18°C</div></div> <div>Circling NA east of Rwy 16-34. Procedure NA at night. Rwy 34 helicopter visibility reduction below 1 SM NA. When Afton altimeter setting not received, procedure NA.</div>	

AWOS-3P 119.025	SALT LAKE CENTER 128.35 239.25	UNICOM 122.8 (CTAF)
--------------------	-----------------------------------	------------------------



VGSI and descent angles not coincident (VGSI Angle 3.50/TCH 52).				
7 NM Holding Pattern				
<div><div>14000</div><div>11700</div><div>10700</div><div>10000</div><div>9420</div><div>8900</div><div>8060</div></div>				
7.4 NM 2.5 NM 1.5 NM 1.4 NM 2.2 NM 4.7 NM				
CATEGORY	A	B	C	D
INAV MDA*	7520-1¼ 1299 (1300-1¼)	7520-1½ 1299 (1300-1½)	7520-3 1299 (1300-3)	NA
INAV MDA	7800-1¼ 1579 (1600-1¼)	7800-1½ 1579 (1600-1½)	7800-3 1579 (1600-3)	NA
CIRCLING	7800-1¼ 1579 (1600-1¼)	7800-1½ 1579 (1600-1½)	7800-3 1579 (1600-3)	NA