




WAAS CH 69643 W16A	APP CRS 166°	Rwy Idg 7025 TDZE 6188 Apt Elev 6221
--	------------------------	---

RNAV (GPS) RWY 16
AFTON LINCOLN COUNTY/GENERAL BOYD L EDDINS FLD (AFO)

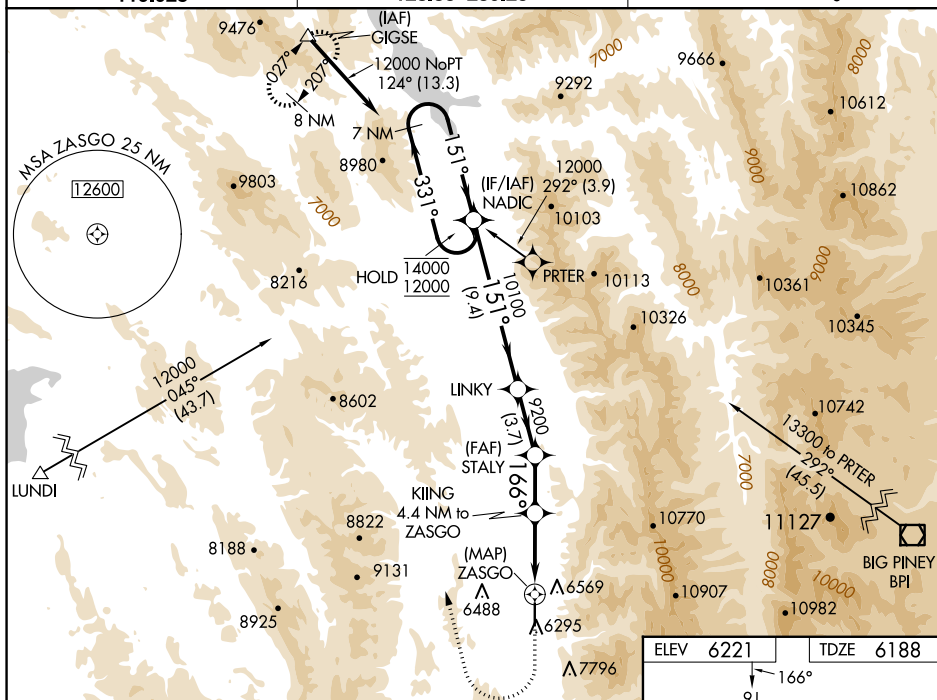
RNP APCH - GPS.

	Rwy 16 helicopter visibility reduction below
	$\frac{3}{4}$ SM NA. When Afton altimeter setting not
	-18°C received, procedure NA.

MISSED APPROACH: (Do not exceed 210K until GIGSE) Climb to 7400 then climbing right turn to 13300 direct GIGSE and hold.
 #Missed approach requires minimum climb of 420 feet per NM to 9000.
 *Missed approach requires minimum climb of 400 feet per NM to 9000.

AWOS-3P
119.025

SALT LAKE CENTER
128.35 239.25

UNICOM
122.8 (CTAF) **L**

VGS1 and RNAV glidepath not coincident
(VGS1 Angle 3.50/TCH 52).

7400 13300 GIGSE

↑ ↗ △

NADIC 7 NM Holding Pattern

331° → 14000
← 151° 12000

GP 3.50°
TCH 45

KIING 4.4 NM to ZASGO

3.1 NM to ZASGO

ZASGO

166°

8040

STALY 9200

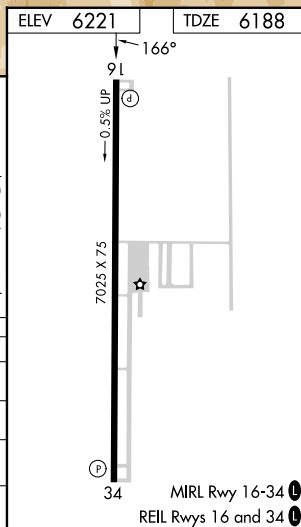
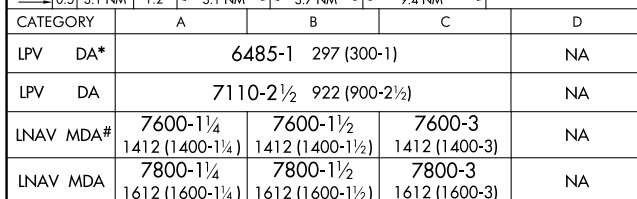
LINKY

151°

10100

9200

0.5 3.1 1.2 3.1 3.7 9.4 NM



RNAV (GPS) RWY 16