

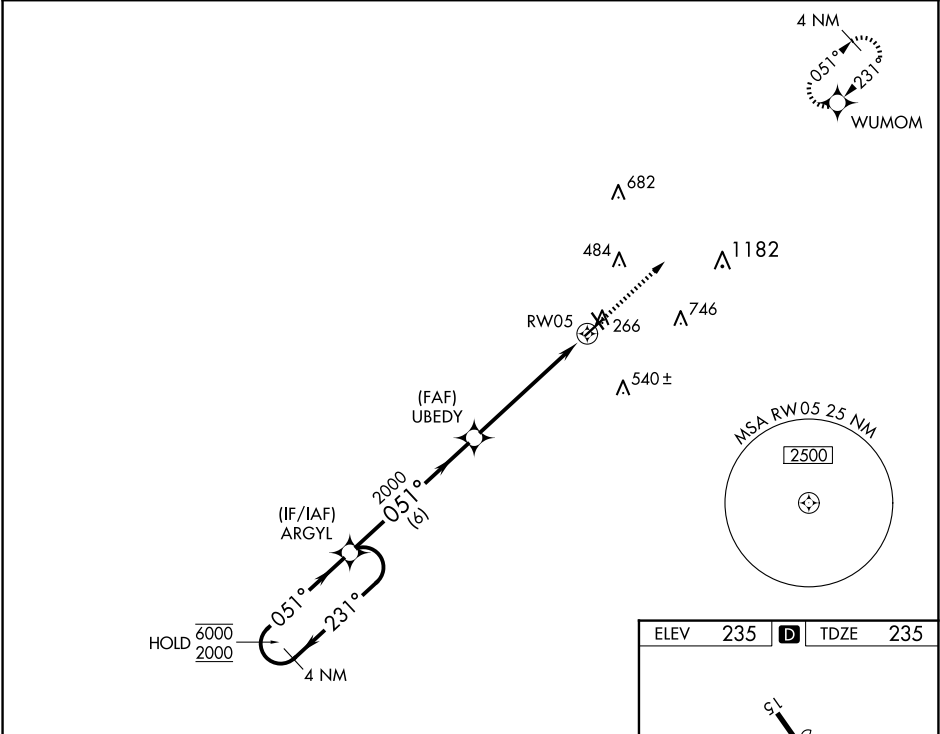
WAAS CH 42506 W05A	APP CRS 051°	Rwy Idg 5000 TDZE 235 Apt Elev 235
--	------------------------	---

RNAV (GPS) RWY 5

COOK COUNTY (15J)

RNP APCH - GPS.	MISSED APPROACH: Climb to 3000 direct WUMOM and hold.
<div><div>▼</div><div>▲</div></div> <div>Procedure NA at night. Rwy 5 helicopter visibility reduction below 1 SM NA. For uncompensated Baro-VNAV systems, LNAV/VNAV NA below -15°C or above 54°C.</div>	

AWOS-3PT 118,025	VALDOSTA APP CON★ 126.6 285.6	UNICOM 122.8 (CTAF) 0
----------------------------	---	---------------------------------



4 NM Holding Pattern		ARGYL	UBEDY	3000	WUMOM
6000 ← 231°		051° →	2000	↑	✱
2000		051° →	2000		
GP 3.00°					
TCH 45					
		6 NM	5.4 NM		
CATEGORY		A	B	C	D
LPV DA		534-1	299 (300-1)		
LNAV/VNAV DA		622-1 1/8	387 (400-1 1/8)		
LNAV MDA		740-1	505 (600-1)	740-1 3/8	505 (600-1 3/8)

