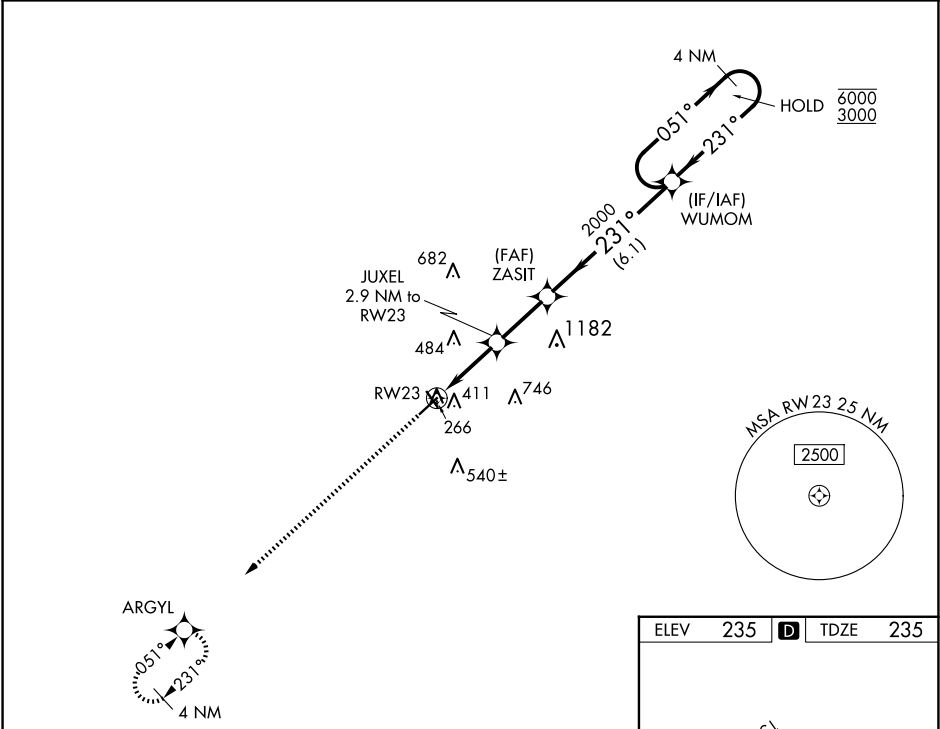


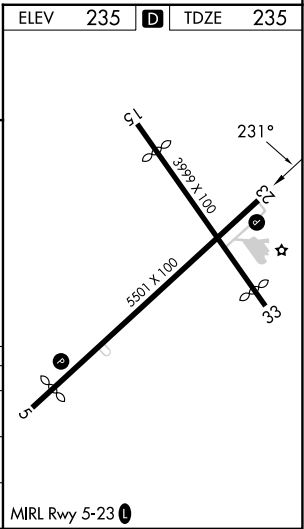
WAAS CH 81833 W23A	APP CRS 231°	Rwy Idg 5501 TDZE 235 Apt Elev 235
--	------------------------	---

RNAV (GPS) RWY 23
COOK COUNTY (15J)

RNP APCH - GPS.		MISSED APPROACH: Climb to 3000 direct ARGYL and hold, continue climb-in-hold to 3000.
AWOS-3PT 118.025	VALDOSTA APP CON★ 126.6 285.6	UNICOM 122.8 (CTAF) 0



3000	ARGYL	VGSi and RNAV glidepath not coincident (VGSi Angle 3.00/TCH 40).			
WUMOM 4 NM Holding Pattern		JUXEL 2.9 NM to RWY 23			
RWY 23		ZASIT 2000			
1220		2000			
GP 3.00° TCH 55		051° → 6000			
231° ← 3000		231°			
2.9 NM		2.5 NM		6.1 NM	
CATEGORY		A	B	C	D
LPV DA		595-1		360 (400-1)	
LNAV/VNAV DA		694-1 ³ / ₈		459 (500-1 ³ / ₈)	
LNAV MDA		700-1	465 (500-1)	700-1 ³ / ₈	465 (500-1 ³ / ₈)



SE-4, 10 JUL 2025 to 07 AUG 2025

SE-4, 10 JUL 2025 to 07 AUG 2025