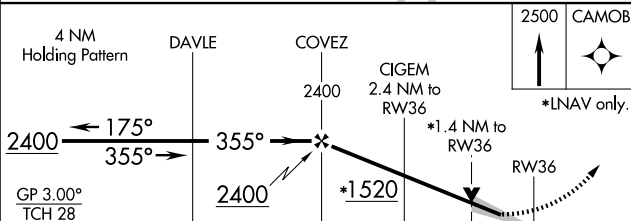
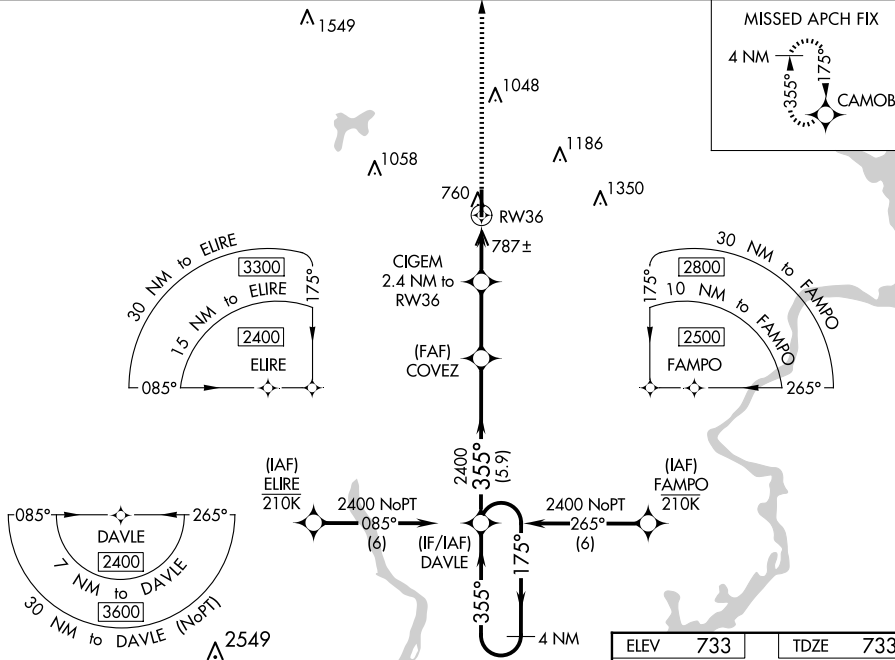

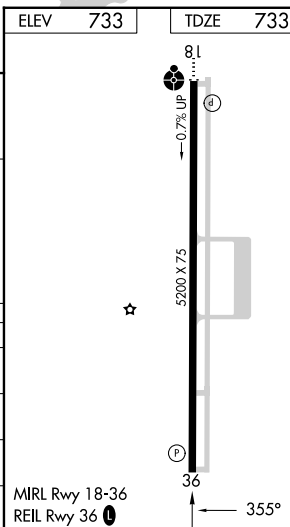


RNAV (GPS) RWY 36
CLAREMORE RGNL (GCM)

MISSED APPROACH: Climb to 2500 direct CAMOB and hold.

UNICOM
122.7 (CTAF) **L**

CATEGORY		A	B	C	D
LPV	DA	983-3/4	250 (300-3/4)		NA
RNAV/ VNAV	DA	983-3/4	250 (300-3/4)		NA
RNAV	MDA	1040-1	307 (400-1)	1040-1 3/8 307 (400-1 3/8)	NA
 CIRCLING		1260-1	527 (600-1)	1380-1 3/4 647 (700-1 3/4)	NA



SC-1, 10 JUL 2025 to 07 AUG 2025