

WAAS CH 63214 W18A	APP CRS 175°	Rwy Idg 5200 TDZE 718 Apt Elev 733
--	------------------------	---

RNAV (GPS) RWY 18

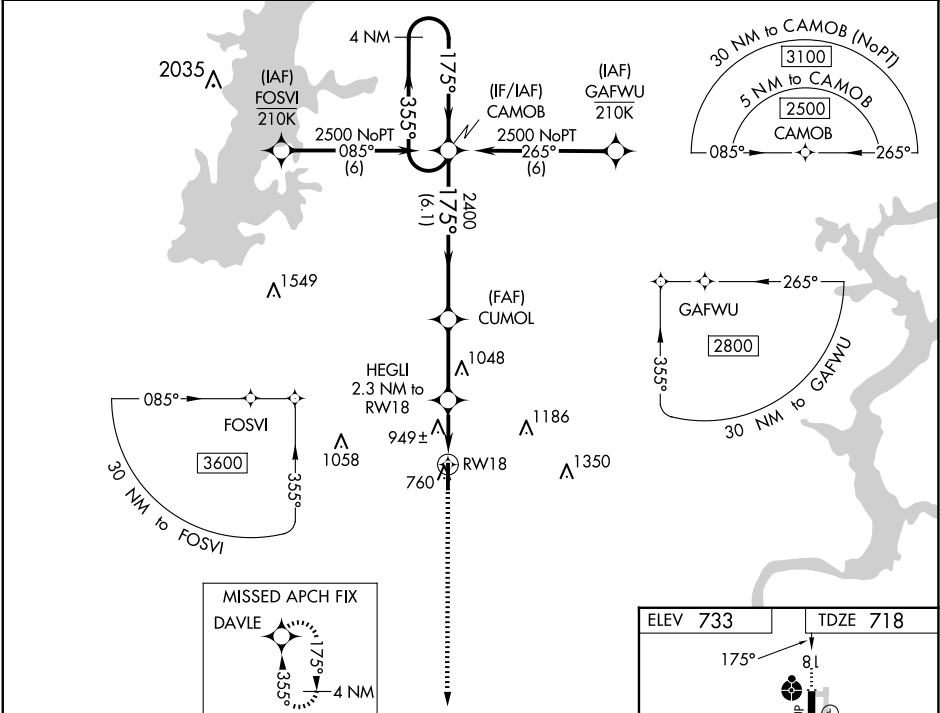
CLAREMORE RGNL (GCM)

For uncompensated Baro-VNAV systems, LNAV/VNAV NA below -16°C (4°F) or above 54°C (130°F). DME/DME RNP-0.3 NA. For inop ALS, increase LNAV/VNAV Cats A/B visibility to 1½ SM.

ODALS

MISSED APPROACH: Climb to 2400 direct DAVLE and hold.

AWOS-3PT 119.925	TULSA APP CON 119.1 360.825	UNICOM 122.7 (CTAF) 0
----------------------------	---------------------------------------	---------------------------------



4 NM Holding Pattern

CAMOB

CUMOL

HEGLI 2.3 NM to RW18

2400

DAVLE

GP 3.00° TCH 43

2500

355°

175°

2400

1460

1.4 NM to RW18

RW18

6.1 NM

2.9 NM

0.9 NM

1.4 NM

*LNAV only.

CATEGORY	A	B	C	D
LPV DA	968-¾	250 (300-¾)		NA
LNAV/VNAV DA	1281-1½	563 (600-1½)		NA
LNAV MDA	1200-¾	482 (500-¾)	1200-1¼ 482 (500-1¼)	NA
CIRCLING	1260-1	527 (600-1)	1380-1¾ 647 (700-1¾)	NA

ELEV 733

TDZE 718

175°

8.1

0.7% UP

52 X 0005

36

MIRL Rwy 18-36

REIL Rwy 36 0