

BURLINGTON, KANSAS

AL-9111 (FAA)

25163

WAAS CH 40222 W36A	APP CRS 355°	Rwy Ldg 5500 THRE 1174 Apt Elev 1174
--	------------------------	---

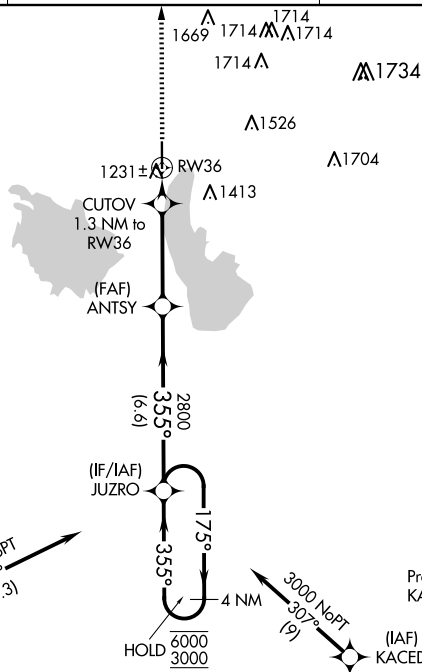
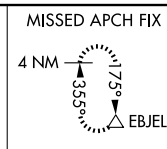
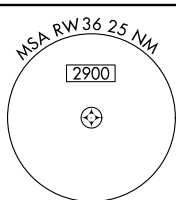
RNAV (GPS) RWY 36
COFFEY COUNTY (UKL)

RNP APCH-GPS.

T For uncompensated Baro-VNAV systems, LNAV/VNAV
A NA below -17°C or above 54°C.

MISSED APPROACH: Climb to 3000 direct EBJEL and hold.

AWOS-3PT 121.125	KANSAS CITY CENTER 127.725 270.25	UNICOM 123.0 (CTAF) 0
----------------------------	---	--



Procedure NA for arrivals at FOWNE
on V307 northwest bound.

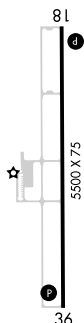
(IAF)
FOWNE 

3000 Nm
059°
(10.3)

Procedure NA for arrivals at
KACED on V131 southbound.

(IAF)
KACED

ELEV 1174		TDZE 1174
-----------	--	-----------



REIL Rwy 18 and 36 ← 355°

BURLINGTON, KANSAS

Amdt 1 07OCT21

38°18'N-95°43'W

COFFEY COUNTY (UKL)

RNAV (GPS) RWY 36

NC-2, 10 JUL 2025 to 07 AUG 2025

[illegible]