

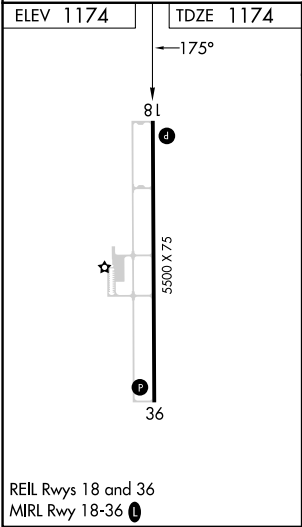
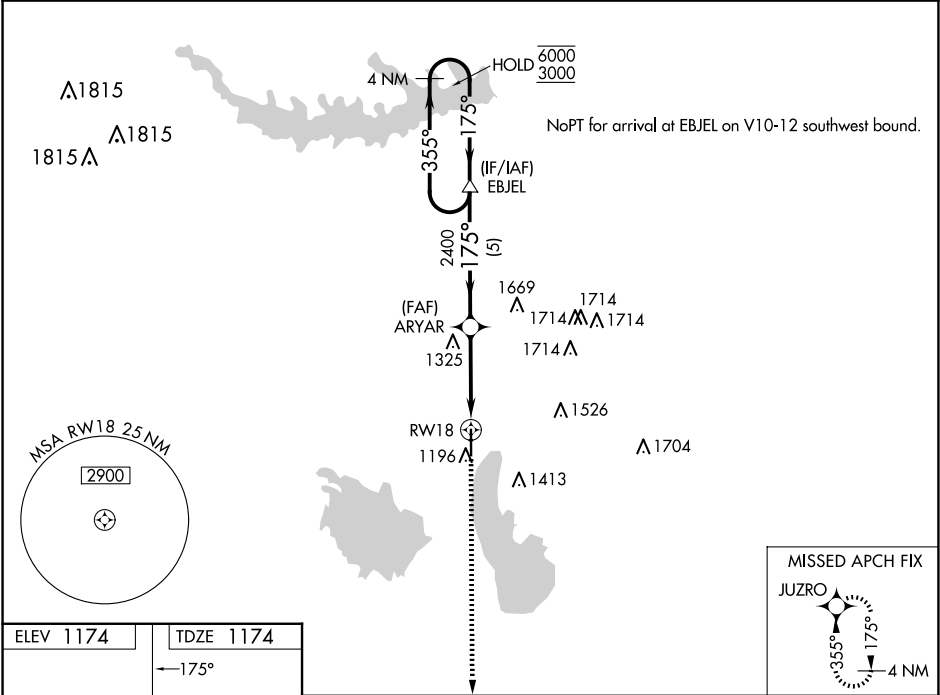
WAAS CH 66021 W18A	APP CRS 175°	Rwy Ldg 5500 TDZE 1174 Apt Elev 1174
--	------------------------	---

RNAV (GPS) RWY 18

COFFEY COUNTY (UKL)

RNP APCH-GPS.	MISSED APPROACH: Climb to 3000 direct JUZRO and hold.
<div><div></div><div></div></div> For uncompensated Baro-VNAV systems, LNAV/VNAV NA below -17°C or above 54°C.	

AWOS-3PT 121.125	KANSAS CITY CENTER 127.725 270.25	UNICOM 123.0 (CTAF) 0
----------------------------	---	---------------------------------



<div>4 NM Holding Pattern</div> <div>EBJEL</div> <div>ARYAR</div> <div>GP 3.00° TCH 40</div> <div>1.2 NM to RW18</div> <div>RW18</div>				
<div>3000</div> <div>JUZRO</div>				
<div>5 NM</div> <div>2.5 NM</div> <div>1.2 NM</div>				
CATEGORY	A	B	C	D
LPV DA	1424-1	250 (300-1)		NA
LNAV/ VNAV DA	1424-1	250 (300-1)		NA
LNAV MDA	1580-1	406 (500-1)	1580-1½ 406 (500-1½)	NA
CIRCLING	1580-1 406 (500-1)	1640-1 466 (500-1)	1920-2¼ 746 (800-2¼)	NA