

WAAS CH <b>82730</b> <b>W04A</b>	APP CRS <b>038°</b>	Rwy Idg TDZE <b>1076</b> Apt Elev <b>1076</b>
--	------------------------	---

RNAV (GPS) RWY 4

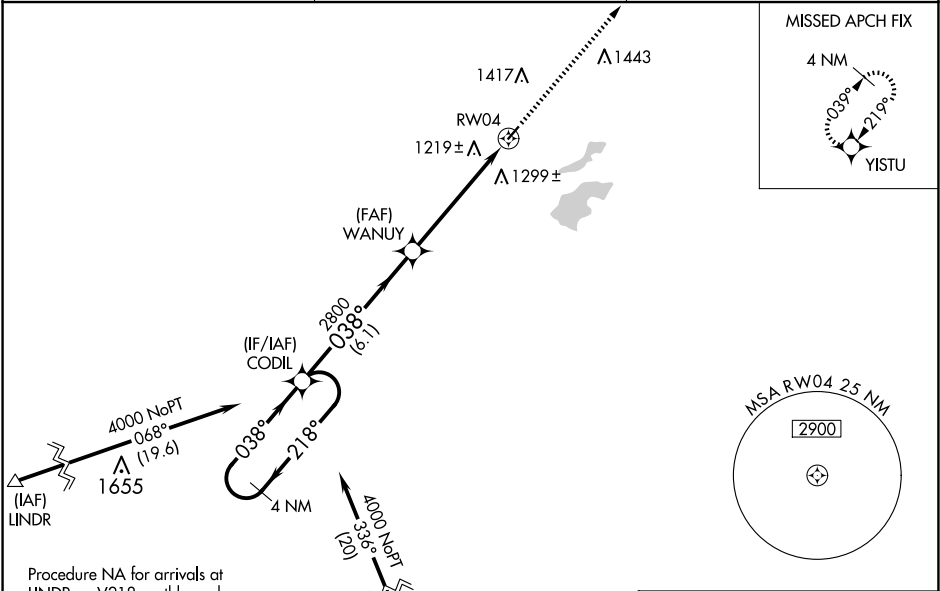
MOOSE LAKE CARLTON COUNTY (MZH)

▼

For uncompensated Baro-VNAV systems, LNAV/VNAV NA below -17°C (2°F) or above 54°C (130°F). Straight-in minimums NA at night. DME/DME RNP-0.3 NA. Visibility reduction by helicopters NA. Baro-VNAV NA when using Cloquet altimeter setting. When local altimeter setting not received, use Cloquet altimeter setting and increase all DA 77 feet and all MDA 80 feet; increase LPV all Cats visibility 1/8 mile and LNAV/VNAV all Cats visibility 3/8 mile.

MISSED APPROACH: Climb to 4000 direct YISTU and hold.

AWOS-3 <b>119.125</b>	DULUTH APP CON <b>125.45 233.7</b>	CTAF <b>122.9 0</b>
--------------------------	---------------------------------------	------------------------



ELEV 1076

TDZE 1076

4 NM Holding Pattern

4000

218°

038°

GP 3.00°

TCH 40

CODIL

2800

038°

2800

6.1 NM

5.3 NM

4000

YISTU

↑

★

VGSI and RNAV glidepath not coincident (VGSI Angle 3.00/TCH 25).

WANUY

RW04

CATEGORY	A	B	C	D
LPV DA	1326-1	250 (300-1)	NA	
LNAV/VNAV DA	1529-1½	453 (500-1½)	NA	
LNAV MDA	1560-1	484 (500-1)	NA	
CIRCLING	1660-1 584 (600-1)	1740-1 664 (700-1)	NA	

REIL Rwy 4 and 22 0

MIRL Rwy 4-22 0