

APP CRS
135°

Rwy Idg
TDZE
265

Apt Elev
265

RNAV (GPS) RWY 13

MEFFORD FLD (TLR)

RNP APCH.

NA

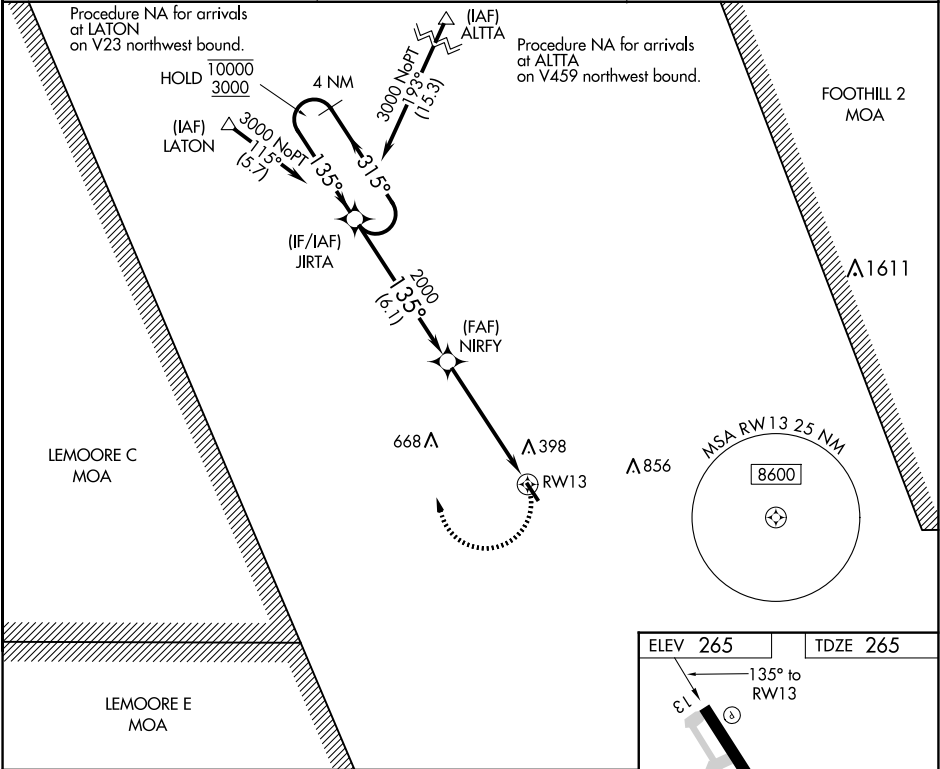
Circling Rwy 31 NA at night. Rwy 13 helicopter visibility reduction below 3/4 SM NA. When local altimeter setting not received, use Visalia altimeter setting and increase all MDA 40 feet.

MISSED APPROACH: Climbing right turn to 3000 direct JIRTA and hold, Continue climb-in-hold to 3000.

AWOS-3PT
120.0

FRESNO APP CON
118.5 268.7

UNICOM
122.7 (CTAF) 0



4 NM Holding Pattern JIRTA

10000 3000

315° 135°

NIRFY

2000

135°

1.4 NM to RW13

3.04° TCH 42

6.1 NM 3.9 NM 1.4

CATEGORY	A	B	C	D
LNAV MDA	740-1	475 (500-1)	740-1 3/8 475 (500-1 3/8)	NA
CIRCLING	760-1	495 (500-1)	760-1 1/2 495 (500-1 1/2)	NA

ELEV 265 TDZE 265

135° to RW13

3001 X 75

31

MIRL Rwy 13-31 0