

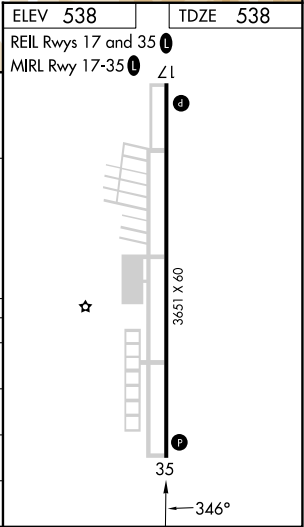
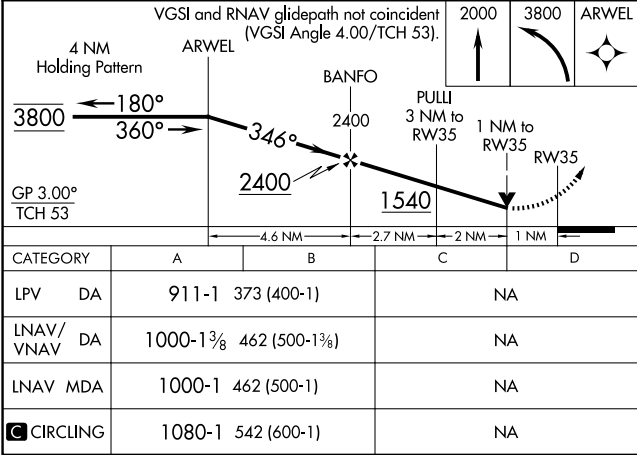
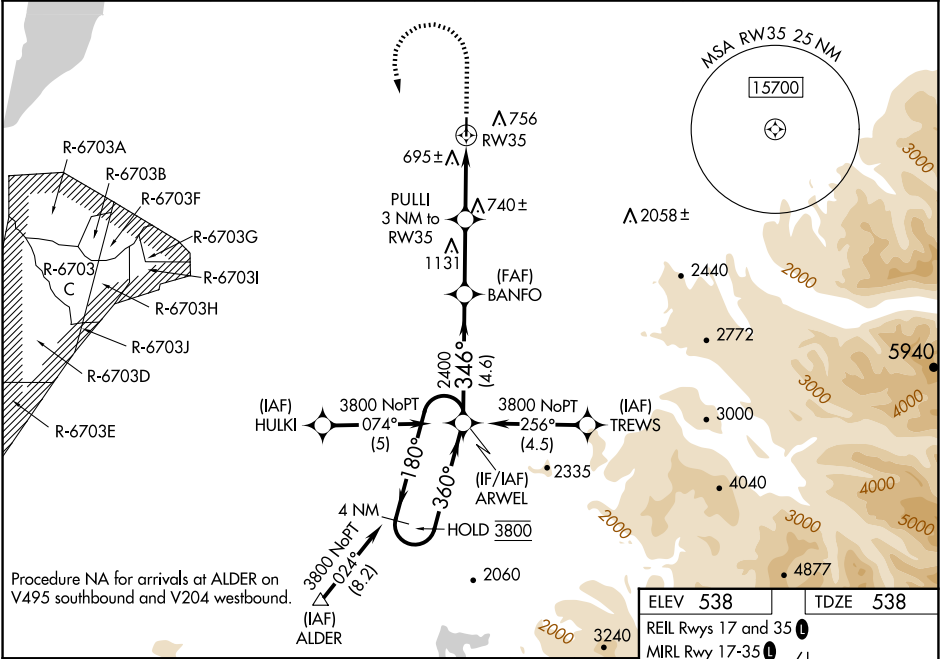
WAAS CH 5793B W35A	APP CRS 346°	Rwy Idg TDZE 538 Apt Elev 538
--	------------------------	---

RNAV (GPS) RWY 35

PIERCE COUNTY/THUN FLD (PLU)

RNP APCH - GPS. ⚠ For uncompensated Baro-VNAV systems, LNAV/VNAV NA below -16°C or above 54°C. Baro-VNAV and VDP NA when using TCM altimeter setting. Rwy 35 helicopter visibility reduction below ¾ SM NA. When local altimeter setting not received, use TCM altimeter setting and increase LPV DA to 960 feet and all visibilities ¼ SM; increase LNAV/VNAV DA to 1049 feet; increase all MDAs 60 feet.	MISSED APPROACH: Climb to 2000 then climbing left turn to 3800 direct ARWEL and hold.
---	---

AWOS-3 128.575	SEATTLE APP CON 126.5 377.15	CLNC DEL 121.85	UNICOM 122.7 (CTAF) 0
--------------------------	--	---------------------------	---------------------------------



NW-1, 10 JUL 2025 to 07 AUG 2025

NW-1, 10 JUL 2025 to 07 AUG 2025