

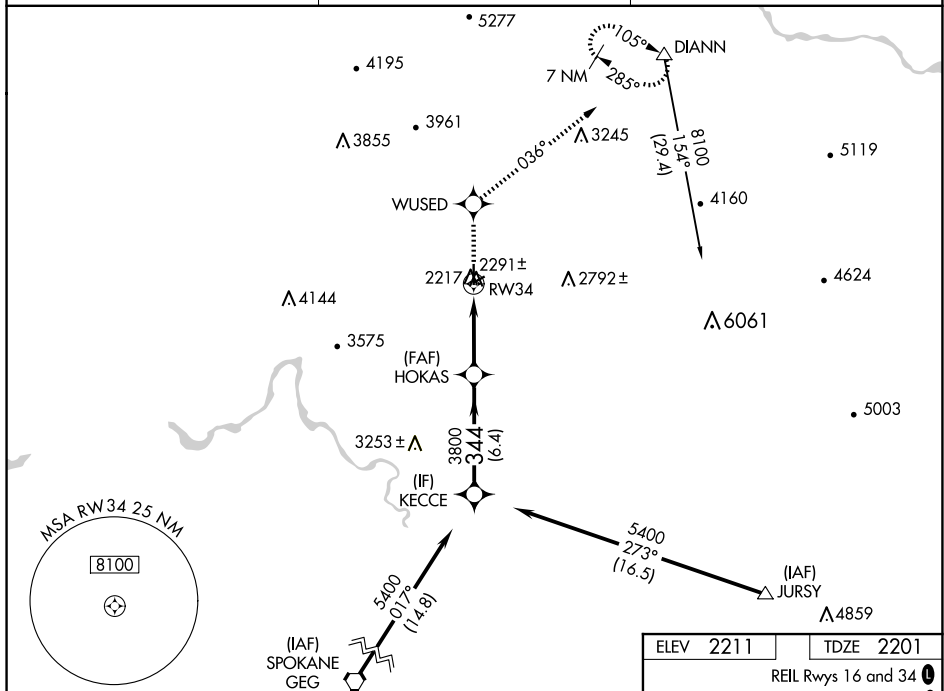
WAAS CH 61306 W34A	APP CRS 344°	Rwy Idg 6101 TDZE 2201 Apt Elev 2211
--	------------------------	---

RNAV (GPS) RWY 34
DEER PARK (DEW)

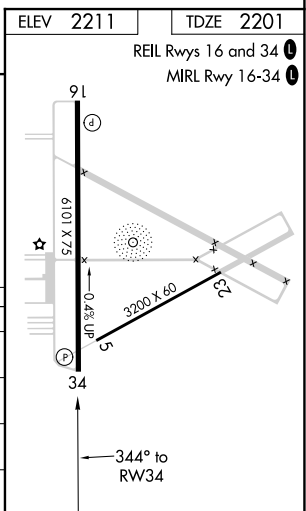
<p>T</p> <p>A</p>	<p>For uncompensated Baro-VNAV systems, LNAV/VNAV NA below -19°C (-2°F) or above 44°C (111°F). When local altimeter setting not received, use Spokane Intl altimeter setting and increase all DA/MDA 80 feet and all visibilities ¼ SM. Circling NA west of Rwy 16-34. DME/DME RNP= 0.3 NA. VDP and Baro-VNAV NA when using Spokane Intl altimeter setting.</p>
---------------------------------	---

MISSED APPROACH: Climb to 8100 direct WUSED and via 036° track to DIANN and hold, continue climb-in-hold to 8100.

ASOS 135.175	SPOKANE APP CON 123.75 282.25	UNICOM 123.0 (CTAF) 0
------------------------	---	---------------------------------



<div> <div>8100 ↑</div> <div>WUSED ✱</div> <div>036° tr</div> <div>DIANN △</div> </div>		<div> <div>HOKAS</div> <div>KECCE</div> </div>	
<div> <div>*LNAV only</div> <div>*1.2 NM to RW34</div> </div>		<div> <div>5400</div> <div>Procedure Turn NA</div> <div>GP 3.00°</div> <div>TCH 40</div> </div>	
<div> <div>RW34</div> <div>1.2</div> <div>3.7 NM</div> <div>6.4 NM</div> </div>		<div> <div>344°</div> <div>3800</div> </div>	
CATEGORY	A	B	C
LPV DA	2466-1 265 (300-1)		
LNAV/VNAV DA	2551-1¼ 350 (400-1¼)		
LNAV MDA	2600-1 399 (400-1)		2600-1¼ 399 (400-1¼)
C CIRCLING	2700-1 489 (500-1)	2700-1½ 489 (500-1½)	2860-2 649 (700-2)



RNAV (GPS) RWY 34

NW-1, 10 JUL 2025 to 07 AUG 2025