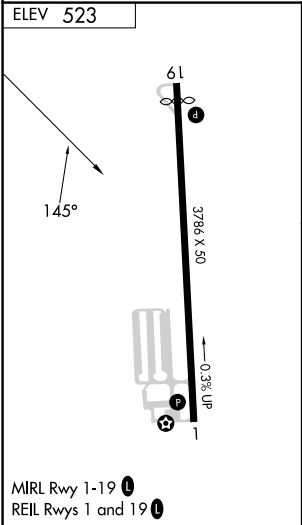
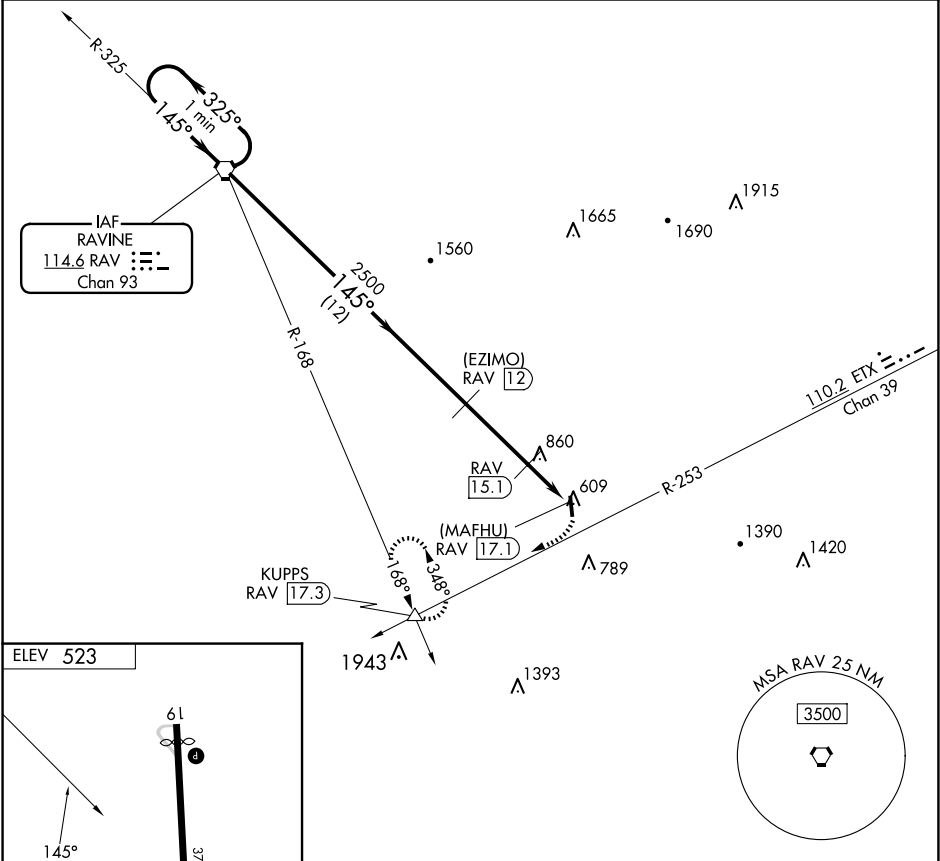


VORTAC RAV	APP CRS	Rwy Idg TDZE	N/A
114.6	145°		N/A
Chan 93		Apt Elev	523

VOR/DME or GPS-A
DECK (9D4)

<div><div><div>V</div><div>▲ NA</div></div></div>	Use Harrisburg Intl, PA altimeter setting. If not received, procedure NA. Circling Rwy 1 NA at night.	MISSED APPROACH: Climbing right turn to 3000, intercept the ETX VORTAC R-253 to KUPPS INT and hold.	
AWOS-2 118.45	RDG ASOS 127.1	HARRISBURG APP CON 118.25 269.45	UNICOM 122.8 (CTAF) 0



One Minute Holding Pattern		RAV VORTAC	(EZIMO) RAV 12	3000 ETX R-253	KUPPS △
3500 ← 325° 145° →		145°	2500 ✕	RAV 15.1 (MAFHU) RAV 17.1	
		12 NM	3.1 NM	2 NM	
CATEGORY	A	B	C	D	
CIRCLING	1140-1 617 (700-1)	1160-1 637 (700-1)	1160-1¾ 637 (700-1¾)	NA	

NE-4, 10 JUL 2025 to 07 AUG 2025

NE-4, 10 JUL 2025 to 07 AUG 2025