

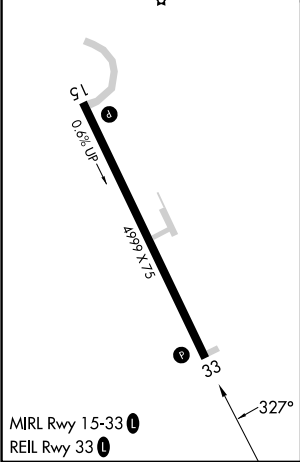
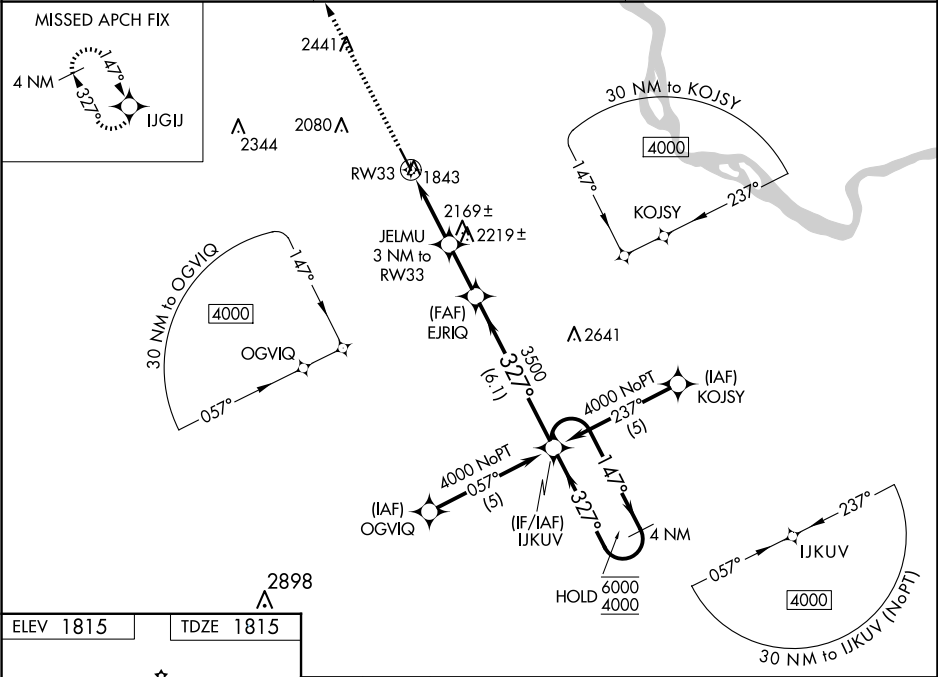
WAAS CH 53318 W33A	APP CRS 327°	Rwy Idg 4999 TDZE 1815 Apt Elev 1815
--	------------------------	---





RNAV (GPS) RWY 33

MERCER COUNTY RGNL (HZE')

RNP APCH - GPS.	MISSED APPROACH: Climb to 4000 direct IJGIJ and hold.
For uncompensated Baro-VNAV systems, LNAV/VNAV NA below -18°C or above 54°C.	

AWOS-3PT 118.675	MINNEAPOLIS CENTER 124.25 236.825	UNICOM 122.8 (CTAF)
----------------------------	---	-------------------------------



4000		IJGIJ		VGSi and RNAV glidepath not coincident (VGSi Angle 3.00/TCH 29).		
						
		JELMU 3 NM to RW33		EJRIQ 3500		
		2 NM to RW33		327°		
RW33		2820		3500		
2 NM		1 NM		2.1 NM		
				6.1 NM		
				IJKUV		
				4 NM Holding Pattern		
				147° → 6000		
				← 327° 4000		
				GP 3.04°		
				TCH 45		
CATEGORY	A		B		C	D
LPV DA	2193-1 378 (400-1)					NA
LNAV/ VNAV DA	2353-1½ 538 (600-1½)					NA
LNAV MDA	2480-1	665 (700-1)	2480-1⅞ 665 (700-1⅞)		NA	
 CIRCLING	2480-1	665 (700-1)	2480-1⅞ 665 (700-1⅞)		NA	