

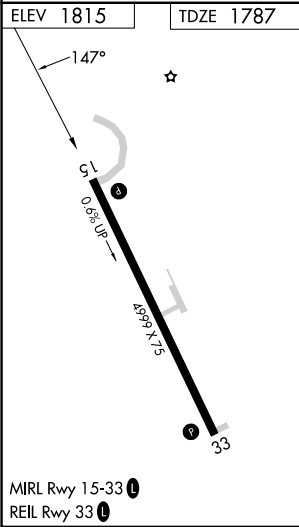
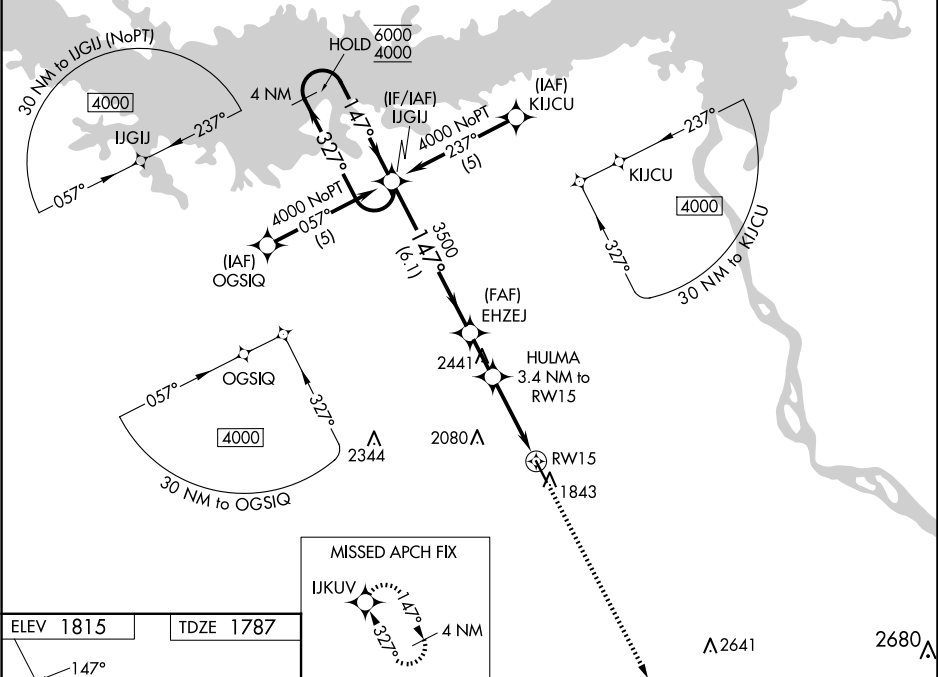
WAAS CH 48818 W15A	APP CRS 147°	Rwy Idg TDZE 1787 Apt Elev 1815
--	------------------------	---

RNAV (GPS) RWY 15

MERCER COUNTY RGNL (HZE)

RNP APCH - GPS.	MISSED APPROACH: Climb to 4000 direct IKUV and hold.
<div><div></div><div></div></div> <div>For uncompensated Baro-VNAV systems, LNAV/VNAV NA below -18°C or above 54°C.</div>	

AWOS-3PT 118.675	MINNEAPOLIS CENTER 124.25 236.825	UNICOM 122.8 (CTAF) 0
----------------------------	---	---------------------------------



MISSED APCH FIX IKUV 147° 4 NM				
VGSi and RNAV glidepath not coincident (VGSi Angle 3.00/TCH 28).				
4 NM Holding Pattern IJGU				
GP 3.04° TCH 45				
EHZEJ 3500 3.4 NM to RWY 15 2 NM to RWY 15 RWY 15				
6.1 NM 1.8 NM 1.4 NM 2 NM				
CATEGORY	A	B	C	D
LPV DA	2165-1 378 (400-1)			NA
LNAV/VNAV DA	2231-1 3/8 444 (500-1 3/8)			NA
LNAV MDA	2460-1	673 (700-1)	2460-1 7/8 673 (700-1 7/8)	NA
CIRCLING	2460-1	645 (700-1)	2480-1 7/8 665 (700-1 7/8)	NA