

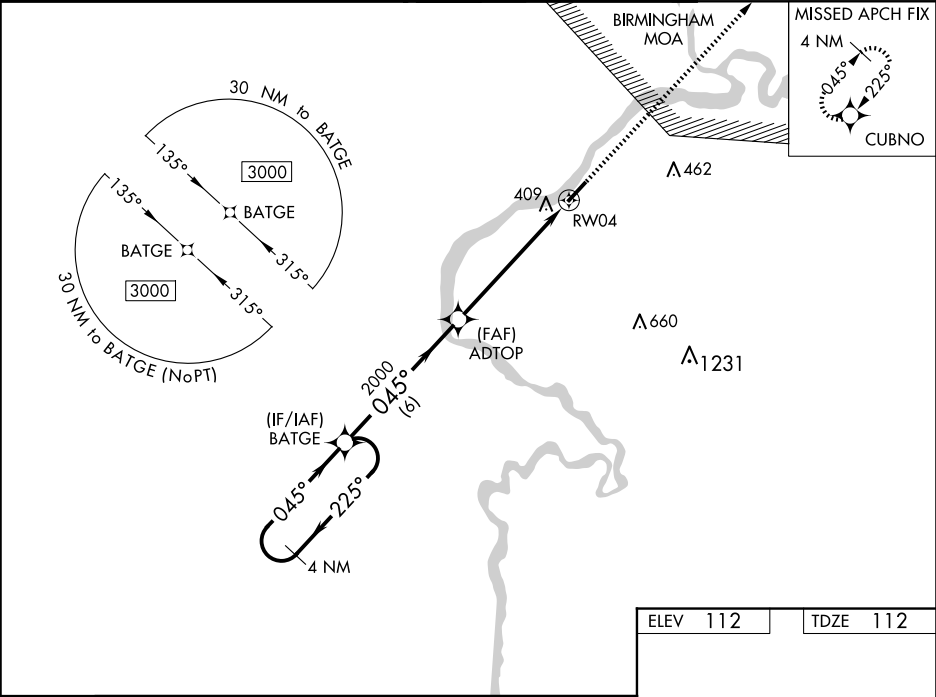
WAAS CH 60939 W04A	APP CRS 045°	Rwy Idg 5002 TDZE 112 Apt Elev 112
--	------------------------	---

RNAV (GPS) RWY 4
DEMOPOLIS RGNL (DYA)

⚠ For uncompensated Baro-VNAV systems, LNAV/VNAV NA below -15°C (5°F) or above 54°C (130°F).
⚠ DME/DME RNP-0.3 NA. When local altimeter setting not received, use Marion altimeter setting and increase LPV and LNAV/VNAV DA 82 feet and all MDA 100 feet; increase LPV and LNAV/VNAV all Cats visibility 3/8 mile, increase LNAV Cats C/D and Circling Cat C visibility 1/4 mile, and increase Circling Cat D visibility 1/2 mile. Baro-VNAV and VDP NA when using Marion altimeter setting. Helicopter visibility reduction below 3/4 SM NA.

MISSED APPROACH:
Climb to 3000 direct CUBNO and hold.

AWOS-3P 119.475	MERIDIAN APP CON* 121.275 348.7	UNICOM 122.8 (CTAF) 0
---------------------------	---	--



4 NM Holding Pattern		VGSI and RNAV glidepath not coincident (VGSI Angle 3.25/TCH 43).		3000	CUBNO
GP 3.00° TCH 44		ADTOP 2000		* LNAV only.	
BATGE		RWY04		* 1.5 NM to RWY04	
6 NM		4.3 NM		1.5 NM	
CATEGORY	A	B	C	D	
LPV DA	362-3/4		250 (300-3/4)		
LNAV/VNAV DA	570-1 1/2		458 (500-1 1/2)		
LNAV MDA	660-1	548 (600-1)	660-1 5/8	548 (600-1 5/8)	
CIRCLING	720-1	608 (700-1)	720-1 3/4 608 (700-1 3/4)	780-2 668 (700-2)	

SE-4, 10 JUL 2025 to 07 AUG 2025

SE-4, 10 JUL 2025 to 07 AUG 2025