

APP CRS  
**236°**

Rwy Idg  
TDZE  
Apt Elev  
**56**  
**56**

**RNAV (GPS) RWY 24**  
SUMMERVILLE (DYB)

RNP APCH-GPS.

▼  
▲

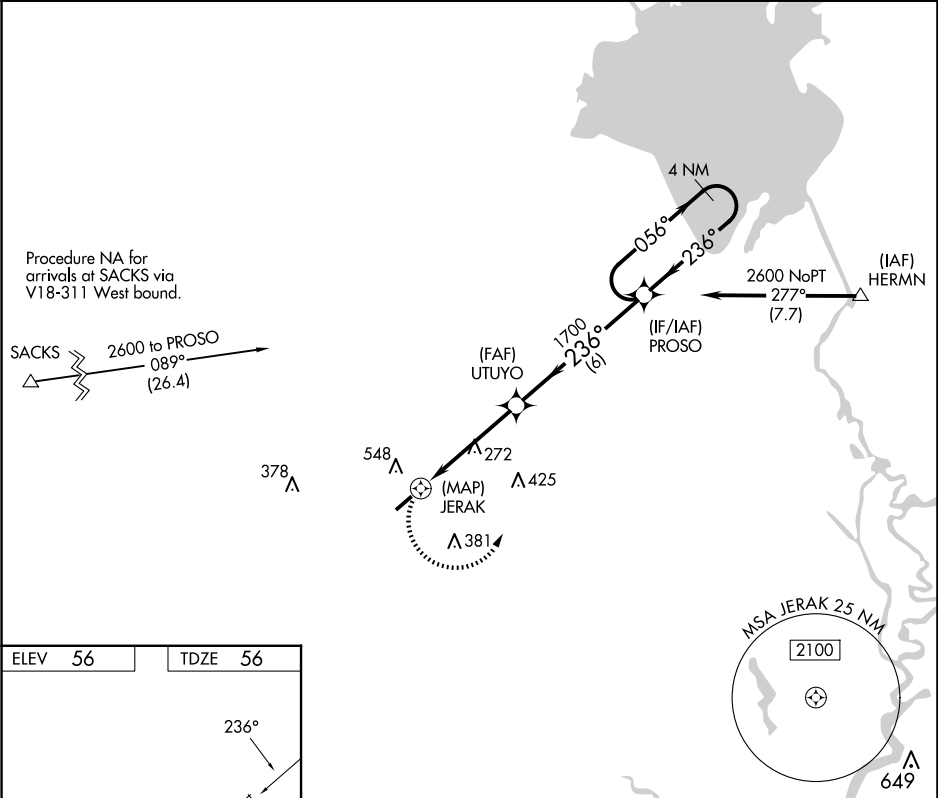
Straight-in/Circling Rwy 24 NA at night.  
Rwy 24 helicopter visibility reduction below 1 SM NA.

MISSED APPROACH: Climbing left turn to 2600 direct PROSO and hold.

AWOS-3  
**119.575**

CHARLESTON APP CON  
**120.7 306.925**

UNICOM  
**123.0** (CTAF) **1**



ELEV 56

TDZE 56

236°

5000 x 75

0.5% LP

2600

PROSO

UTUYO

JERAK

1700

PROSO

4 NM Holding Pattern

056°

236°

2600

Visual Segment - Obstacles.

0.5

4.5 NM

6 NM

CATEGORY	A	B	C	D
LNAV MDA	540-1	484 (500-1)	540-1 <sup>3</sup> / <sub>8</sub> 484 (500-1 <sup>3</sup> / <sub>8</sub> )	NA
CIRCLING	860-1 804 (900-1)	860-1 <sup>1</sup> / <sub>4</sub> 804 (900-1 <sup>1</sup> / <sub>4</sub> )	860-2 <sup>1</sup> / <sub>4</sub> 804 (900-2 <sup>1</sup> / <sub>4</sub> )	NA