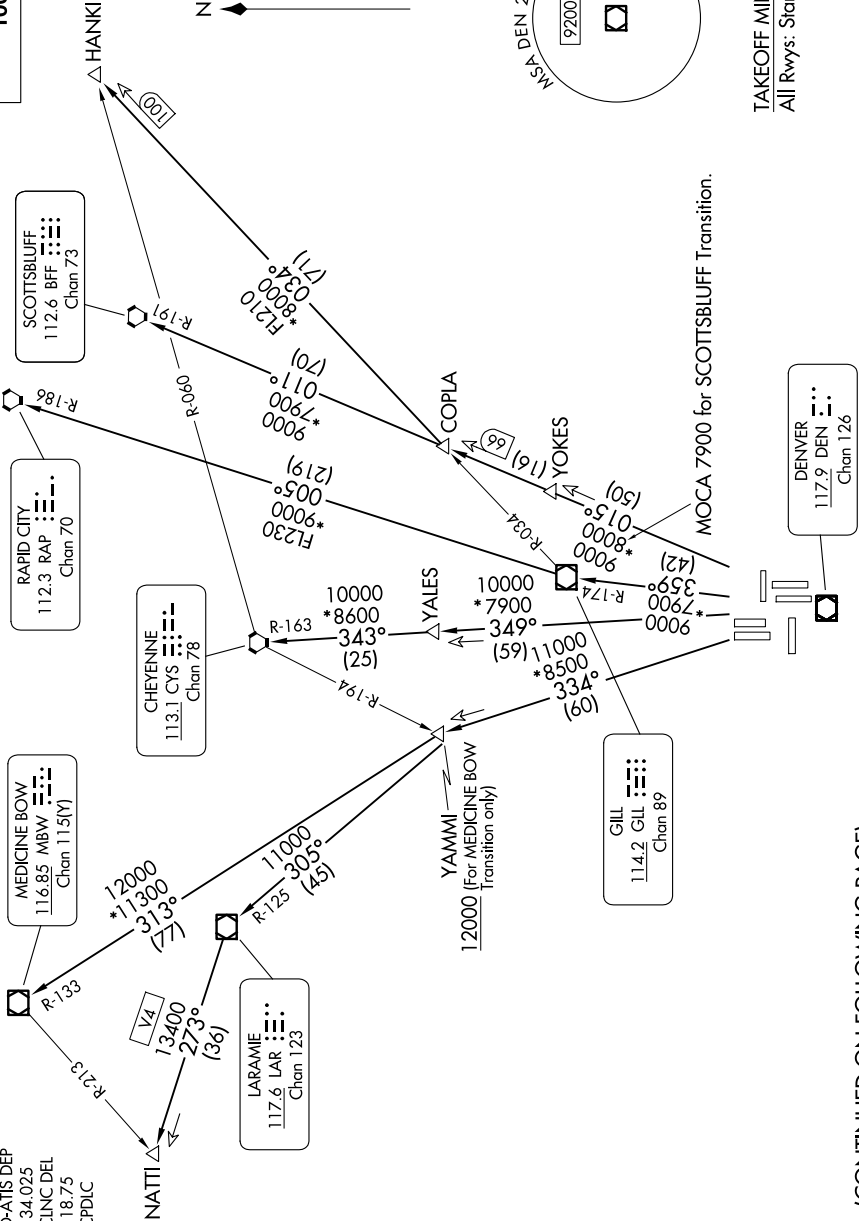


SW-1, 10 JUL 2025 to 07 AUG 2025

DENVER DEP CON
127.05 363.25
D-ATIS DEP
134.025
CLNC DEL
118.75
CPDLC

RADAR required.

TOP ALTITUDE:
10000



(CONTINUED ON FOLLOWING PAGE)

SW-1, 10 JUL 2025 to 07 AUG 2025