

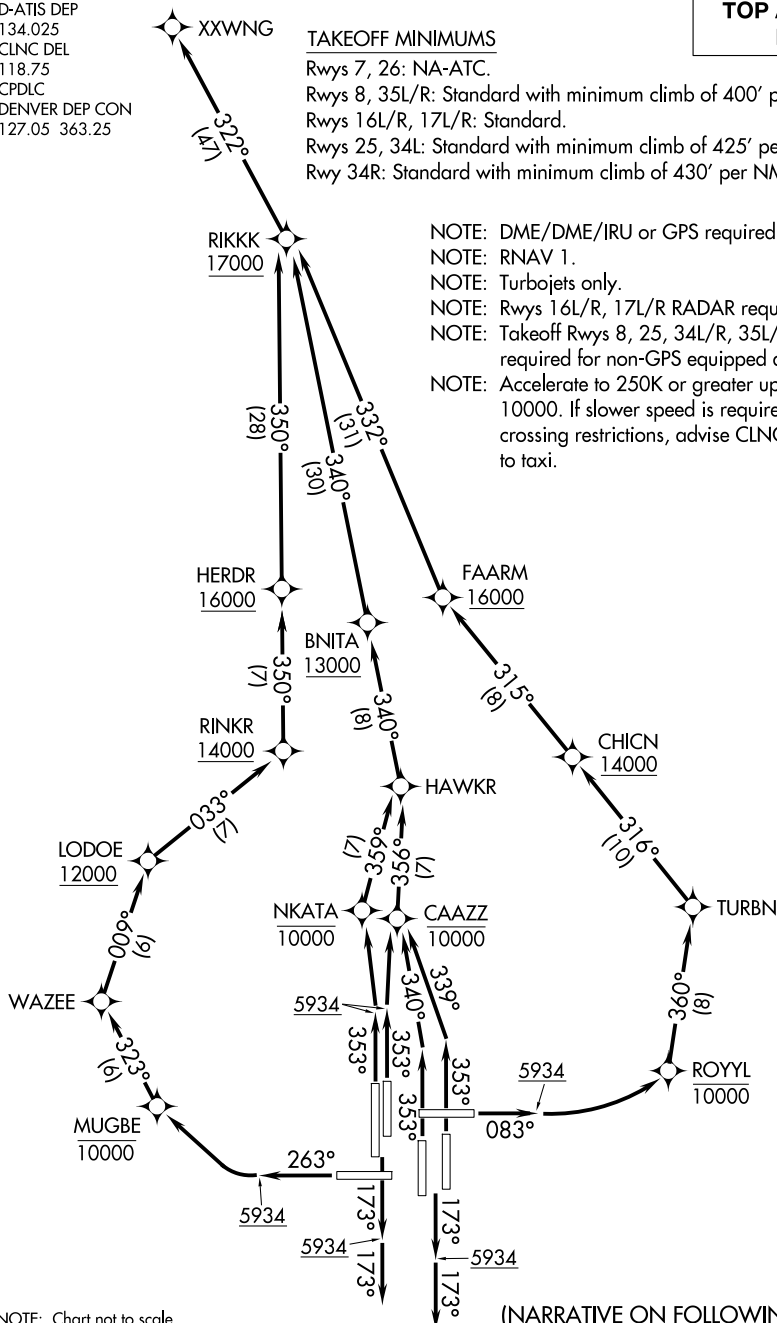
D-ATIS DEP
134.025
CLNC DEL
118.75
CPDLC
DENVER DEP CON
127.05 363.25

TAKEOFF MINIMUMS

Rwys 7, 26: NA-ATC.
 Rwys 8, 35L/R: Standard with minimum climb of 400' per NM to 5934.
 Rwys 16L/R, 17L/R: Standard.
 Rwys 25, 34L: Standard with minimum climb of 425' per NM to 5934.
 Rwy 34R: Standard with minimum climb of 430' per NM to 5934.

TOP ALTITUDE:
FL230

NOTE: DME/DME/IRU or GPS required.
NOTE: RNAV 1.
NOTE: Turbojets only.
NOTE: Rwy 16L/R, 17L/R RADAR required.
NOTE: Takeoff Rwy 8, 25, 34L/R, 35L/R - RADAR required for non-GPS equipped aircraft.
NOTE: Accelerate to 250K or greater upon reaching 10000. If slower speed is required to meet crossing restrictions, advise CLNC DEL prior to taxi.



NOTE: Chart not to scale.

(NARRATIVE ON FOLLOWING PAGE)

XXWNG ONE DEPARTURE (RNAV)

(XXWNG1.XXWNG) 31DEC20

DENVER, COLORADO
DENVER INTL (DEN)

SW-1, 10 JUL 2025 to 07 AUG 2025