

WAAS CH <b>87128</b> <b>W07A</b>	APP CRS <b>082°</b>	Rwy Idg <b>12000</b> TDZE <b>5352</b> Apt Elev <b>5434</b>
--	------------------------	--

RNAV (GPS) Y RWY 7

DENVER INTL (DEN)

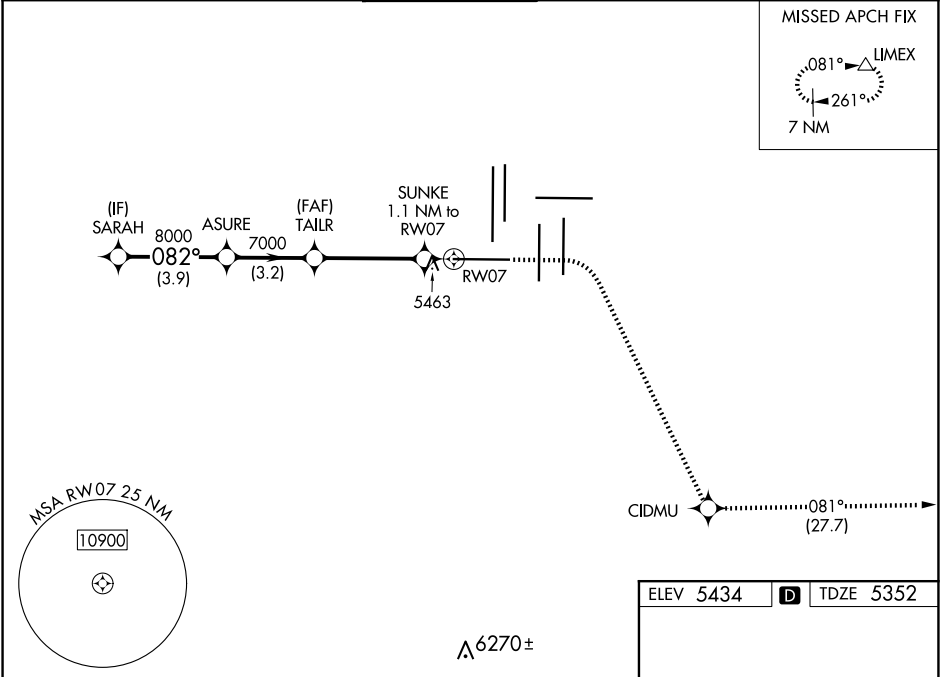
RNP APCH - GPS.

Simultaneous approach authorized. For uncompensated Baro-VNAV systems, LNAV/VNAV NA below -22°C or above 54°C. LNAV procedure NA during simultaneous operations. For inop ALS, increase LNAV/VNAV all Cats visibility to RVR 4500, and LNAV Cat C/D visibility to RVR 5500. Use of FD or AP required during simultaneous operations.

MALSR

MISSED APPROACH: Climb to 5900 then climbing right turn to 10000 direct CIDMU and on track 081° to LIMEX and hold.

D-ATIS <b>125.6 379.9</b> (ARR) <b>134.025</b> (DEP)	DENVER APP CON <b>119.3 307.3</b> (N) <b>120.35 379.3</b> (S)	DENVER TOWER <b>128.75 273.55</b>	GND CON <b>121.35 379.175</b> (W) <b>121.85 377.1</b> (E)	CLNC DEL <b>118.75</b>	CPDLC
--	---	--------------------------------------	---	---------------------------	-------



VGSI and RNAV glidepath not coincident (VGSI Angle 3.00/TCH 68).

SARAH 9000

ASURE 8000

TAILR 7000

SUNKE 1.1 NM to RW07

RW07

5740

GP 3.00° TCH 55

3.9 NM

3.2 NM

4 NM

1.1 NM

5900

10000

CIDMU

tr 081°

LIMEX

CATEGORY	A	B	C	D
LPV DA	5552/18		200 (200-½)	
LNAV/VNAV DA	5626/24		274 (200-½)	
LNAV MDA	5720/24 368 (300-½)		5720/35 368 (300-¾)	

HIRL all Rwys

TDZ/CL Rwys 7, 16L, 16R, 17R, 26, 34L, 34R, 35L, 35R