


WAAS CH 81830 W17A	APP CRS 173°	Rwy Idg 12000 TDZE 5339 Apt Elev 5434
--	------------------------	--

RNAV (GPS) Y RWY 17L
DENVER INTL (DEN)

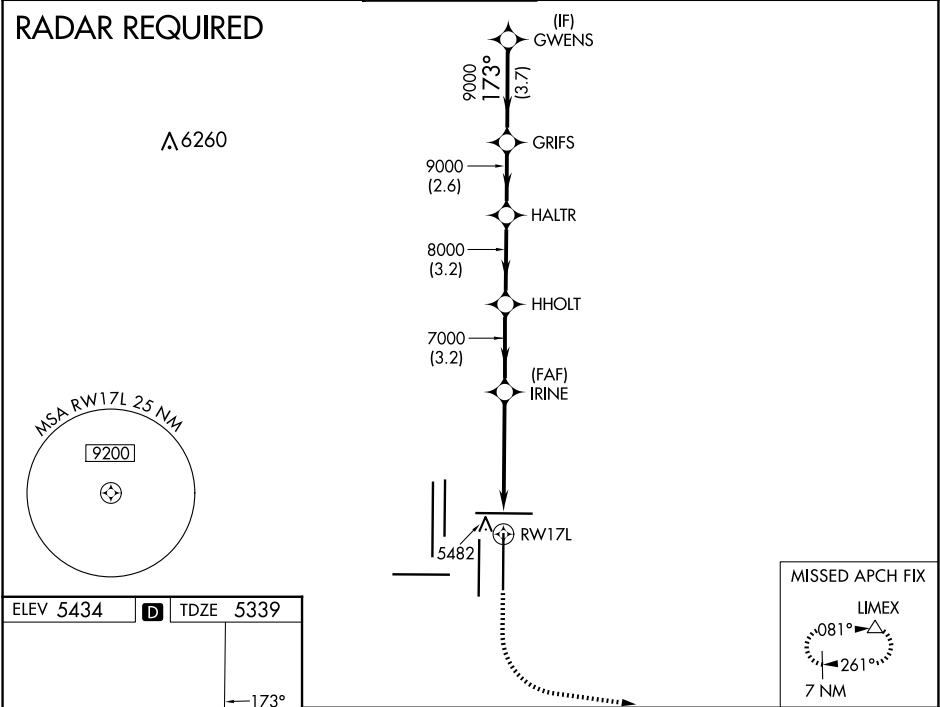
▼ For uncompensated Baro-VNAV systems, LNAV/VNAV NA below -25°C (-13°F) or above 48°C (119°F). DME/DME RNP-0.3 NA. LNAV procedure NA during simultaneous operations. For inoperative MALS/R increase LNAV Cts C/D visibility to RVR 5500. Use of FD or AP providing RNAV track guidance required during simultaneous operations. Simultaneous approach authorized with Rwy 16L/16R and 17R.
RVR 1800 authorized with use of FD or AP or HUD to DA.

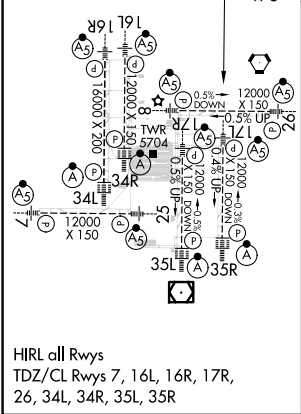
MALS/R



MISSED APPROACH:
Climb to 5900 then climbing left turn to 10000 direct LIMEX and hold.

D-ATIS 125.6 379.9 (ARR) 134.025 (DEP)	DENVER APP CON 119.3 307.3 (N) 120.35 379.3 (S)	DENVER TOWER 132.35 239.275	GND CON 121.35 379.175 (W) 121.85 377.1 (E)	CLNC DEL 118.75	CPDLC
--	---	---------------------------------------	---	---------------------------	-------



ELEV 5434	D	TDZE 5339
		
<p>5900 10000 LIMEX</p> <p>VGSI and RNAV glidepath not coincident (VGSI Angle 3.00/TCH 66).</p> <p>*LNAV only</p> <p>*1 NM to RWY 17L</p> <p>IRINE HHOLT HALTR GRIFS GWENS</p> <p>7000 8000 9000 9000 9000</p> <p>GP 3.00° TCH 48</p> <p>1 NM 4.1 NM 3.2 NM 3.2 NM 2.6 NM 3.7 NM</p>		
CATEGORY A B C D		
LPV DA# 5539/24 200 (200-½)		
LNAV/VNAV DA 5648/24 309 (300-½)		
LNAV MDA 5700/24 361 (300-½) 5700/35 361 (300-¾)		

SW-1, 10 JUL 2025 to 07 AUG 2025

SW-1, 10 JUL 2025 to 07 AUG 2025