

WAAS CH 99307 W16A	APP CRS 173°	Rwy Idg 12000 TDZE 5357 Apt Elev 5434
--	------------------------	--

RNAV (GPS) Y RWY 16L
DENVER INTL (DEN)

▼ For uncompensated Baro-VNAV systems, LNAV/VNAV NA below -25°C (-13°F) or above 45°C (114°F). Simultaneous approach authorized with Rwy 17 L/R. DME/DME RNP -0.3 NA. LNAV procedure NA during simultaneous operations. For inoperative MALS/R, increase LNAV/VNAV all Cats, and LNAV Cats C/D visibility to RVR 4500. Use of FD or AP providing RNAV track guidance required during simultaneous operations.

MALSR



MISSED APPROACH: Climb to 5900 then climbing right turn to 10000 direct BINBE and hold, continue climb-in-hold to 10000.

D-ATIS	DENVER APP CON	DENVER TOWER	GND CON	CLNC DEL	CPDLC
125.6 379.9 (ARR)	119.3 307.3 (N)	135.3 351.95	121.35 379.175 (W)	118.75	
134.025 (DEP)	120.35 379.3 (S)		121.85 377.1 (E)		

A6260

RADAR REQUIRED

MISSED APCH FIX

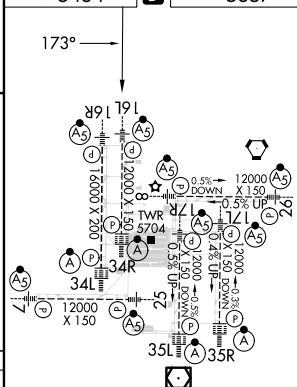


Diagram illustrating a VGS glidepath (VGS Angle 3.00/TCH 71) for a runway. The glidepath is shown as a line starting from the runway threshold and extending upwards. Key points and distances are marked:

- Runway Threshold:** Indicated by a dashed line and a distance of 0.8 NM to the start of the glidepath.
- GLIDE 1000:** The glidepath starts at a height of 1000 feet.
- LEETS:** A point on the glidepath at a height of 7000 feet, located 3.7 NM from the start.
- KIKME:** A point on the glidepath at a height of 8000 feet, located 3.2 NM from LEETS.
- KUURT:** A point on the glidepath at a height of 9000 feet, located 3.9 NM from KIKME.
- JOBOB:** The end of the glidepath at a height of 10000 feet, located 3.9 NM from KUURT.
- Angles:** The glidepath angle is 173 degrees.
- Distances:**
 - 0.8 NM from the threshold to the start of the glidepath.
 - 0.5 NM from the start of the glidepath to LEETS.
 - 3.7 NM from the start to LEETS.
 - 3.2 NM from LEETS to KIKME.
 - 3.9 NM from KIKME to KUURT.
 - 3.9 NM from KUURT to JOBOB.
- Other Markers:**
 - *LNAV only: Indicated by a curved arrow pointing to the start of the glidepath.
 - *0.8 NM to RW16L: Indicated by a curved arrow pointing to the start of the glidepath.
 - *5820*: A height marker on the glidepath.
 - GP 3.00° TCH 60: Indicated at the end of the glidepath.

CATEGORY	A	B	C	D
LPV DA		5557/18	200 (200-½)	
LNAV/ VNAV DA		5647/24	290 (300-½)	
LNAV MDA		5660/24	303 (300-½)	

ELEV 5434	D	TDZE 5357
-----------	----------	-----------



HIRL all Rwys
TDZ/CL Rwys 7, 16L, 16R, 17R,
26, 34L, 34R, 35L, 35R

RNAV (GPS) Y RWY 16L