

DENVER, COLORADO

AL-9077 (FAA)

24361

APP CRS	Rwy Idg	12000
353°	TDZE	5370
	Apt Elev	5434

RNAV (RNP) Z RWY 35R
DENVER INTL (DEN)

V For uncompensated Baro-VNAV systems, procedure NA below -25°C (-13°F) or above 45°C (114°F). GPS required. For inoperative ALSF, increase RNP 0.10 all Cats visibility to RVR 4500 and RNP 0.30 all Cats visibility to RVR 5000. Simultaneous approach authorized. Use of FD or AP providing RNAV track guidance required during simultaneous operations.

ALSF-2



MISSED APPROACH: Climb to 5900, then climbing right turn to 8000 direct YIMZO and hold.

D-ATIS
125.6 379.9 (ARR)
134.025 (DEP)

DENVER APP CON
119.3 307.3 (N)
120.35 379.3 (S)

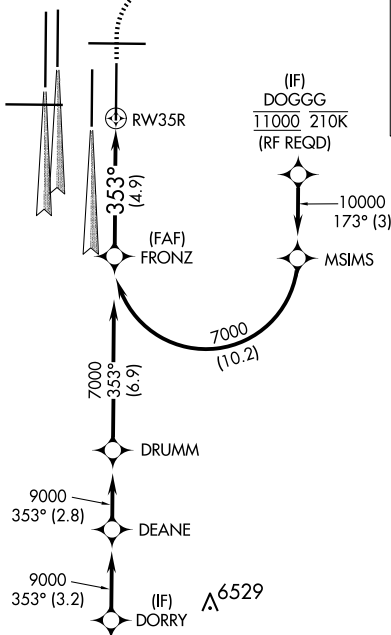
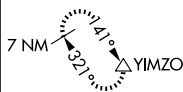
DENVER TOWER
132.35 239.275

GND CON
121.35 379.175 (W)
121.85 377.1 (E)

CLNC DE
118.75

CPDLC

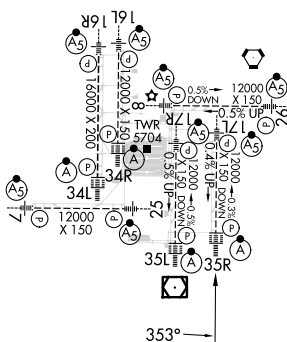
MISSED APCH FIX



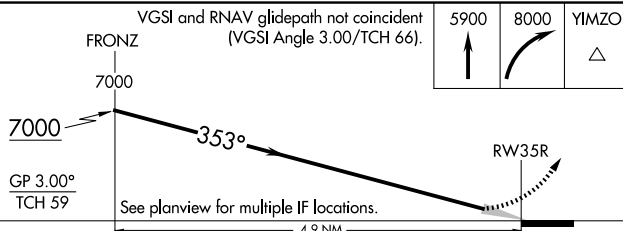
RADAR REQUIRED

ELEV 5434	D	TDZE 5370
-----------	----------	-----------

HIRL all Rwys
TDZ/CL Rwys 7, 16L, 16R, 17R,
26, 34L, 34R, 35L, 35R



VGSI and RNAV glidepath not coincident
(VGSI Angle 3.00/TCH 66).



CATEGORY	A	B	C	D
RNP 0.10 DA	5631/24 261 (200-1/2)			
RNP 0.30 DA	5702/32 332 (300-5/8)			

AUTHORIZATION REQUIRED

DENVER, COLORADO
Orig-C 01FEB18

39°52'N-104°40'W

DENVER INTL (DEN)

RNAV (RNP) Z RWY 35R

SW-1, 10 JUL 2025 to 07 AUG 2025