

APP CRS 353°	Rwy Idg 12000 TDZE 5354 Apt Elev 5434
------------------------	--

RNAV (RNP) Z RWY 34R
DENVER INTL (DEN)

V For uncompensated Baro-VNAV systems, procedure NA below -25°C (-13°F) or above 46°C (114°F). GPS required. For inoperative ALSF, increase RNP 0.10 all Cats visibility to RVR 6000 and RNP 0.20 all Cats visibility to 1½ mile and RNP 0.30 all Cats visibility to 2¼ mile. Simultaneous approach authorized. Use of FD or AP providing RNAV track guidance required during simultaneous operations.

ALSF-2



MISSED APPROACH:
Climb to 6000 then
climbing left turn to 10000
direct HYGEN and hold.

D-ATIS
125.6 379.9 (ARR)
134.025 (DEP)

DENVER APP CON
119.3 307.3 (N)
120.35 379.3 (S)

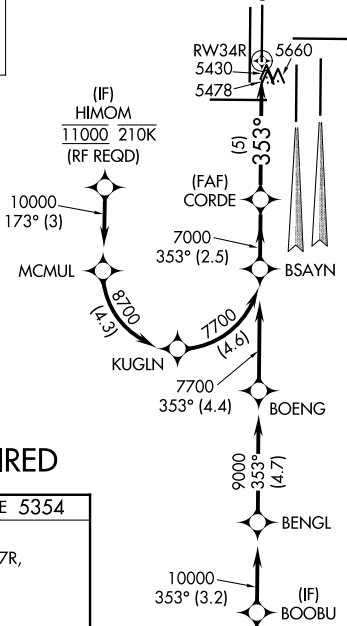
DENVER TOWER
135 2 351 05

GND CON
121.35 379.175 (W)
121.85 377.1 (E)

CLNC DEL
118.75

CPDLC

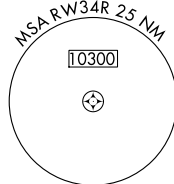
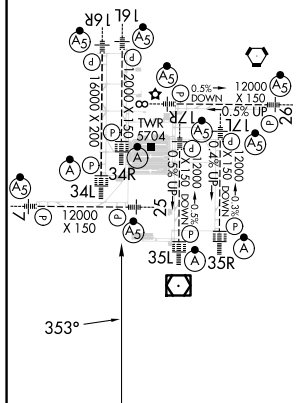
MISSED APCH FIX



RADAR REQUIRED



ELEV 5434	D	TDZE 5354
-----------	----------	-----------

HIRL all Rwy's
TDZ/CL Rwy's 7, 16L, 16R, 17R,
26, 34L, 34R, 35L, 35R

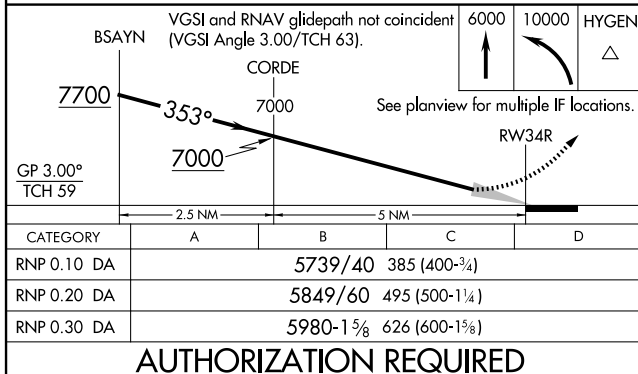


△⁶⁵²⁹

VGSI and RNAV glidepath not coincident (VGSI Angle 3.00/TCH 63).

6000	10000	HYGEN
		

See planview for multiple IF locations.



AUTHORIZATION REQUIRED