
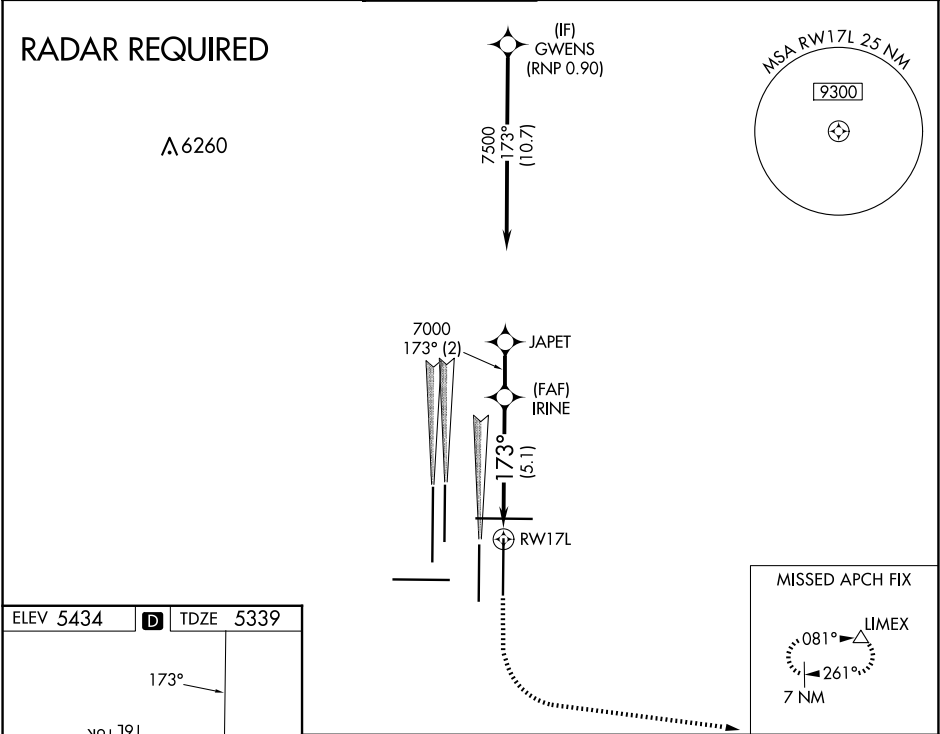


APP CRS <b>173°</b>	Rwy Idg	<b>12000</b>
	TDZE	<b>5339</b>
	Apt Elev	<b>5434</b>

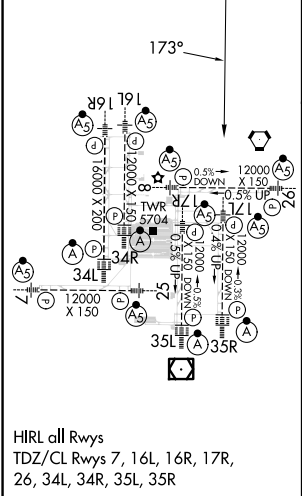
RNAV (RNP) Z RWY 17L  
DENVER INTL (DEN)





<b>▼</b> GPS required. For inoperative MALS, increase RNP 0.10 all Cats visibility to RVR 4500 and RNP 0.30 all Cats visibility to RVR 6000. Simultaneous approach authorized. Use of FD or AP providing RNAV track guidance required during simultaneous operations. For uncompensated Baro-VNAV systems, procedure NA below -25°C (-13°F) or above 48°C (118°F).	MALS 	MISSED APPROACH: Climb to 5900 then climbing left turn to 10000 direct LIMEX and hold.
--	---	--

D-ATIS <b>125.6 379.9</b> (ARR) <b>134.025</b> (DEP)	DENVER APP CON <b>119.3 307.3</b> (N) <b>120.35 379.3</b> (S)	DENVER TOWER <b>132.35 239.275</b>	GND CON <b>121.35 379.175</b> (W) <b>121.85 377.1</b> (E)	CLNC DEL <b>118.75</b>	CPDLC
--	---	---------------------------------------	---	---------------------------	-------



ELEV 5434	<b>D</b>	TDZE 5339
-----------	----------	-----------



5900	10000	LIMEX	VGSI and RNAV glidepath not coincident (VGSI Angle 3.00/TCH 66).	JAPET
			IRINE	7500
	RW17L		7000	7000
			173°	
			GP 3.00° TCH 48	
			5.1 NM	2 NM
CATEGORY	A	B	C	D
RNP 0.10 DA		5600/24	261 (200-½)	
RNP 0.30 DA		5716/40	377 (300-¾)	
<b>AUTHORIZATION REQUIRED</b>				