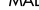


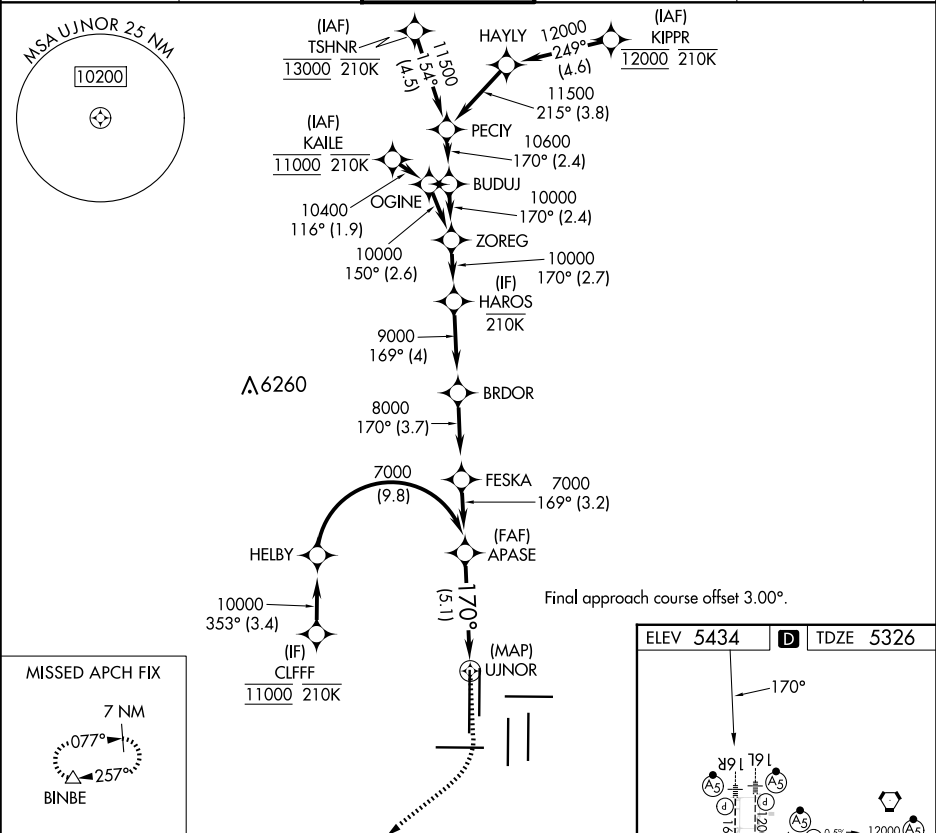
APP CRS
170°

Rwy Ldg
TDZE
5326
Apt Elev
5434

RNAV (RNP) Z RWY 16R

DENVER INTL (DEN)

RNP AR APCH - GPS.			MALSR 	MISSED APPROACH: Climb to 5900 then climbing right turn to 10000 direct BINBE and hold, continue climb-in-hold to 10000.		
▼ For uncompensated Baro-VNAV systems, procedure NA below -25°C or above 54°C. Simultaneous approach authorized. For inop ALS, increase RNP 0.30 all Cats visibility to RVR 4500.						
D-ATIS 125.6 379.9 (ARR) 134.025 (DEP)	DENVER APP CON 119.3 307.3 (N) 120.35 379.3 (S)	DENVER TOWER 135.3 351.95	GND CON 121.35 379.175 (W) 121.85 377.1 (E)		CLNC DEL 118.75	CPDLC



APASE 7000

VGS1 and RNAV glidepath not coincident (VGS1 Angle 3.00/TCH 71).

5900 10000 BINBE

GP 3.00° TCH 55

See planview for multiple IF locations.

5.1 NM

CATEGORY

RNP 0.30 DA

5597/24 271 (200-½)

AUTHORIZATION REQUIRED

ELEV 5434

TDZE 5326

170°

HIRL all Rwys

TDZ/CL Rwys 7, 16L, 16R, 17R, 26, 34L, 34R, 35L, 35R

SW-1, 10 JUL 2025 to 07 AUG 2025

SW-1, 10 JUL 2025 to 07 AUG 2025