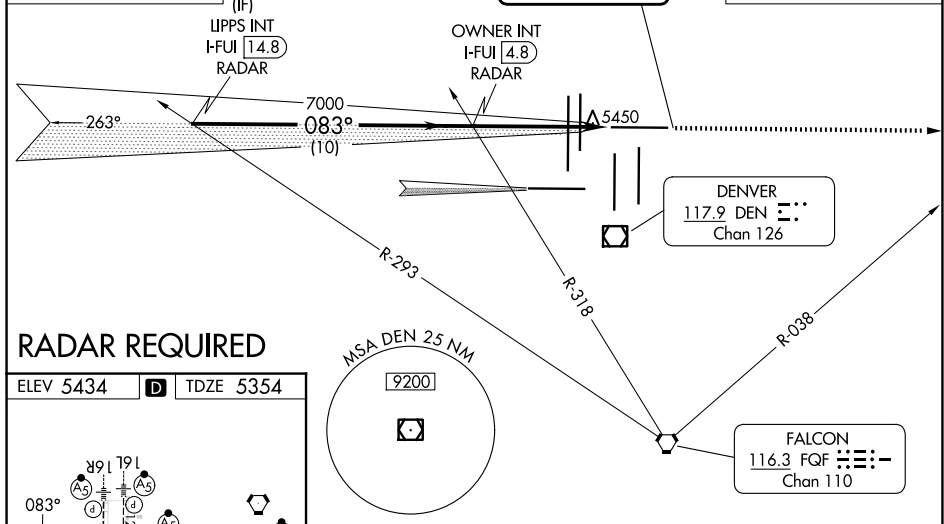


ILS or LOC RWY 8
DENVER INTL (DEN)

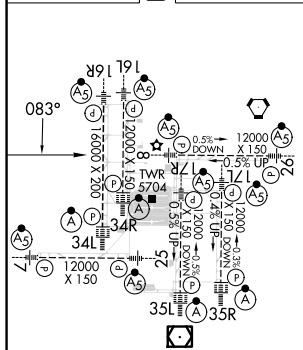
MISSED APPROACH: Climb to 10000 on heading 083° and on FQF VORTAC R-038 to WITNE INT/FQF 28.1 DME and hold.

Figure 1: Frequency Allocation Diagrams for the 114.2 MHz Channel. The diagram shows two frequency allocation scenarios for the 114.2 MHz channel. The left scenario shows a frequency allocation for the 114.2 MHz channel with a 1056 kHz offset from the 114.2 MHz channel. The right scenario shows a frequency allocation for the 114.2 MHz channel with a 1056 kHz offset from the 114.2 MHz channel. The diagram includes labels for various frequency channels and their offsets from the 114.2 MHz channel. A central box labeled 'LOCALIZER' shows the 108.9 MHz channel with a 1056 kHz offset from the 114.2 MHz channel.



RADAR REQUIRED

| | | |
|-----------|----------|-----------|
| ELEV 5434 | D | TDZE 5354 |
|-----------|----------|-----------|



TDZ/CL Rwy 7, 16L, 16R,
17R, 26, 34L, 34R, 35L, 35R
HIRL all Rwy

| FAF to MAP 5 NM | | | | | |
|-----------------|------|------|------|------|------|
| Knots | 60 | 90 | 120 | 150 | 180 |
| Min:Sec | 5:00 | 3:20 | 2:30 | 2:00 | 1:40 |

39°52'N-104°40'W

DENVER INTL (DEN)

ILS or LOC RWY 8

SW-1, 10 JUL 2025 to 07 AUG 2025