
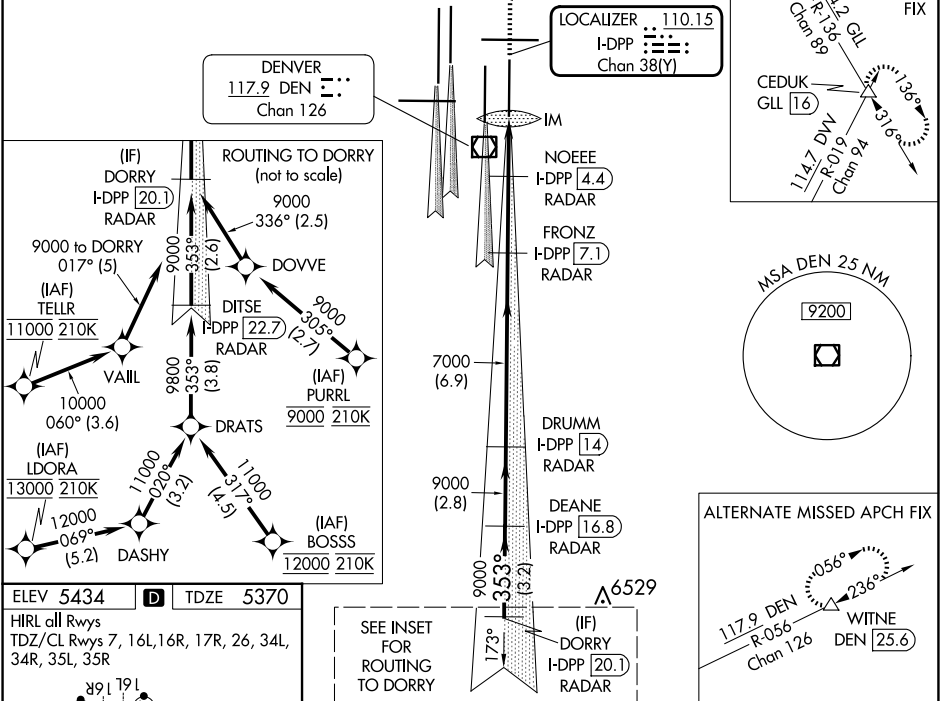


LOC/DME I-DPP <b>110.15</b> Chan <b>38(Y)</b>	APP CRS <b>353°</b>	Rwy Idg <b>12000</b> TDZE <b>5370</b> Apt Elev <b>5434</b>
---	------------------------	--

ILS or LOC RWY 35R  
DENVER INTL (DEN)

<b>T</b>	S-LOC 35R DME or RADAR required. Simultaneous approach authorized with Rwy 34L, Rwy 34R, and Rwy 35L.		ALSF-2 	MISSED APPROACH: Climb to 5800 then climbing right turn to 10000 on heading 048° and on GLL VORTAC R-136 to CEDUK/GLL 16 DME and hold.		
	D-ATIS <b>125.6 379.9</b> (ARR) <b>134.025</b> (DEP)	DENVER APP CON <b>119.3 307.3</b> (N) <b>120.35 379.3</b> (S)	DENVER TOWER <b>132.35 239.275</b>	GND CON <b>121.35 379.175</b> (W) <b>121.85 377.1</b> (E)	CLNC DEL <b>118.75</b>	CPDLC

RADAR or GPS REQUIRED



ELEV 5434	<b>D</b>	TDZE 5370
HIRL all Rwy's TDZ/CL Rwy's 7, 16L, 16R, 17R, 26, 34L, 34R, 35L, 35R		
FAF to MAP 4.9 NM		
Knots	60	90 120 150 180
Min:Sec	4:54	3:16 2:27 1:58 1:38

VGSI and ILS glidepath not coincident (VGSI Angle 3.00/TCH 66).				5800	10000	GLL	CEDUK
				↑	hdg 048°	R-136	△
DORR I-DPP 20.1 RADAR				DEANE I-DPP 16.8 RADAR	DRUMM I-DPP 14 RADAR	FRONZ I-DPP 7.1 RADAR	NOEE I-DPP 4.4 RADAR
9000 — 353° — 9000				9000	7000	7000	7000
GS 3.00° TCH 59				3.2 NM	2.8 NM	6.9 NM	2.7 NM
CATEGORY A				B	C	D	
S-ILS 35R				5570/18 200 (200-½)			
S-LOC 35R				5740/24 370 (400-½) 5740/35 370 (400-¾)			