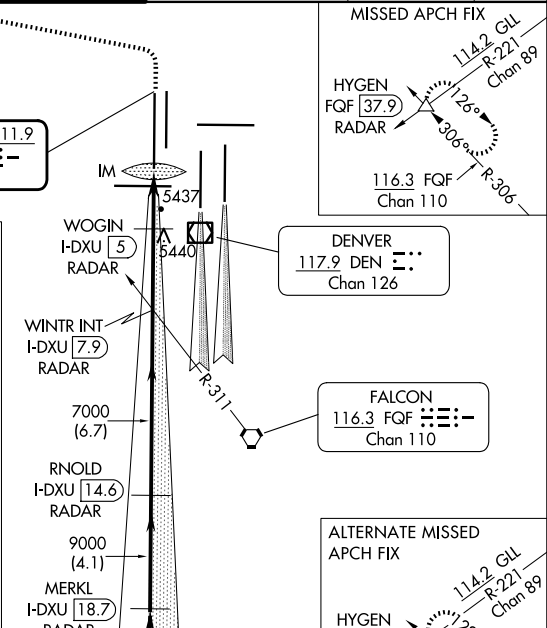
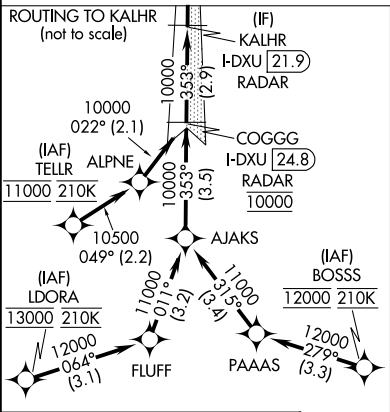
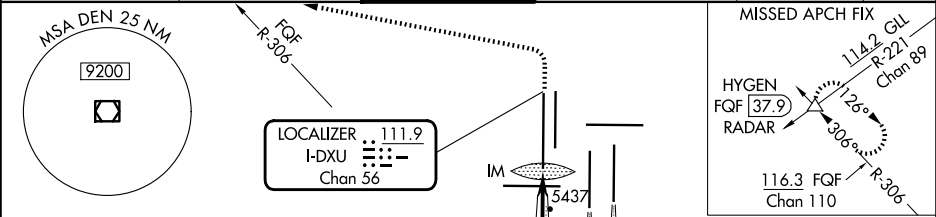


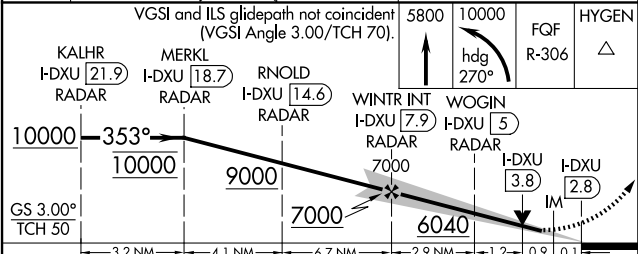
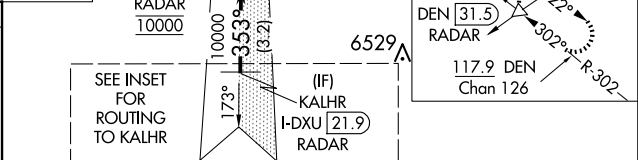
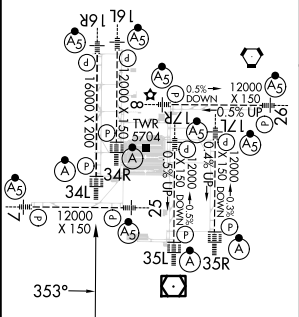
LOC/DME I-DXU <b>111.9</b> Chan <b>56</b>	APP CRS <b>353°</b>	Rwy Idg TDZE <b>5327</b> Apt Elev <b>5434</b>
---	------------------------	---

ILS or LOC RWY 34L  
DENVER INTL (DEN)

RNAV-1 GPS or RADAR required for procedure entry. From LDORA, BOSSS, TELLR: RNAV-1 GPS required. DME or RADAR required.			ALSF-2 	MISSED APPROACH: Climb to 5800 then climbing left turn to 10000 on heading 270° and FQF VORTAC R-306 to HYGEN/FQF 37.9 DME/RADAR and hold.	
Simultaneous approach authorized with Rwy 35L/R. For inop ALS, increase S-LOC Cat C and D visibility to RVR 5500.					
D-ATIS <b>125.6 379.9</b> (ARR) <b>134.025</b> (DEP)	DENVER APP CON <b>119.3 307.3</b> (N) <b>120.35 379.3</b> (S)	DENVER TOWER <b>135.3 351.95</b>	GND CON <b>121.35 379.175</b> (W) <b>121.85 377.1</b> (E)	CLNC DEL <b>118.75</b>	CPDLC



ELEV 5434	D	TDZE 5327
HIRL all Rwys		
TDZ/CL Rlys 7, 16L, 16R, 17R, 26, 34L, 34R, 35L, 35R		



						CATEGORY		A		B		C		D	
FAF to MAP 5.1 NM							S-ILS 34L		5527/18 200 (100-½)						
Knots	60	90	120	150	180										
Min:Sec	5:06	3:24	2:33	2:02	1:42	S-LOC 34L		5700/24 373 (300-½)				5700/35 373 (300-¾)			

SW-1, 10 JUL 2025 to 07 AUG 2025

SW-1, 10 JUL 2025 to 07 AUG 2025