

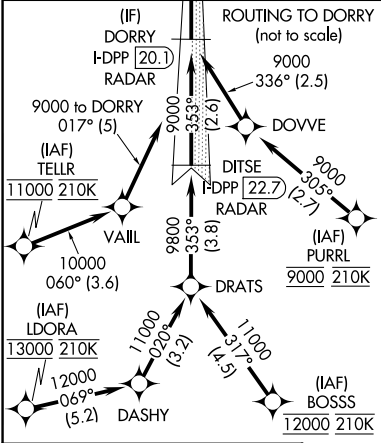
LOC/DME I-DPP <b>110.15</b> Chan <b>38(Y)</b>	APP CRS <b>353°</b>	Rwy ldg <b>12000</b> TDZE <b>5370</b> Apt Elev <b>5434</b>
---	------------------------	--

ILS RWY 35R (SA CAT I)  
DENVER INTL (DEN)

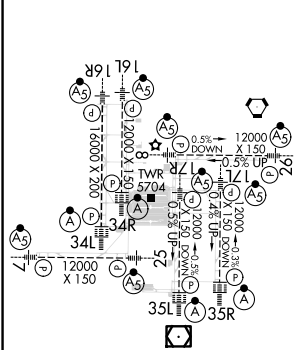
Requires specific OPSPEC, MSPEC, or LOA approval and use of HUD to DH. Simultaneous approach authorized with Rwy 34L, Rwy 34R, and Rwy 35L.	ALSF-2 	MISSED APPROACH: Climb to 5800 then climbing right turn to 10000 on heading 048° and on GLL VORTAC R-136 to CEDUK/GLL 16 DME and hold.
---	------------	--

D-ATIS <b>125.6 379.9</b> (ARR) <b>134.025</b> (DEP)	DENVER APP CON <b>119.3 307.3</b> (N) <b>120.35 379.3</b> (S)	DENVER TOWER <b>132.35 239.275</b>	GND CON <b>121.35 379.175</b> (W) <b>121.85 377.1</b> (E)	CLNC DEL <b>118.75</b>	CPDLC
--	---	---------------------------------------	---	---------------------------	-------

RADAR or GPS REQUIRED



ELEV 5434	D	TDZE 5370
-----------	---	-----------



HIRL all Rwys  
TDZ/CL Rwys 7, 16L, 16R, 17R, 26, 34L, 34R, 35L, 35R

SEE INSET FOR ROUTING TO DORRY

VGSI and ILS glidepath not coincident (VGSI Angle 3.00/TCH 66).	5800	10000	GLL	CEDUK
	↑	hdg 048°	R-136	△

DORRY I-DPP [20.1] RADAR	DEANE I-DPP [16.8] RADAR	DRUMM I-DPP [14] RADAR	FRONZ I-DPP [7.1] RADAR
--------------------------	--------------------------	------------------------	-------------------------

9000	353°	9000	9000	7000	7000
------	------	------	------	------	------

3.2 NM	2.8 NM	6.9 NM	4.9 NM	1126'
--------	--------	--------	--------	-------

CATEGORY	A	B	C	D
S-ILS 35R	RA 161/14 150 DA 5520			

SA CATEGORY I ILS - SPECIAL AIRCREW & AIRCRAFT CERTIFICATION REQUIRED