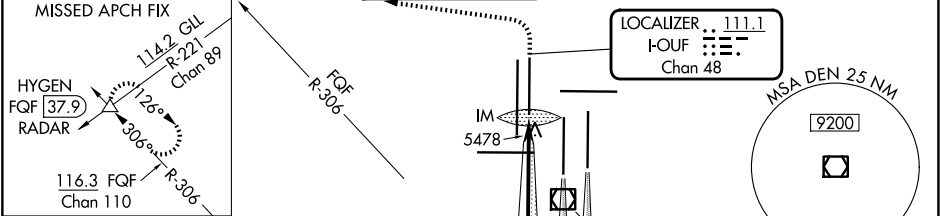


LOC/DME I-OUF 111.1 Chan 48	APP CRS 353°	Rwy Idg 12000 TDZE 5354 Apt Elev 5434
---	------------------------	--

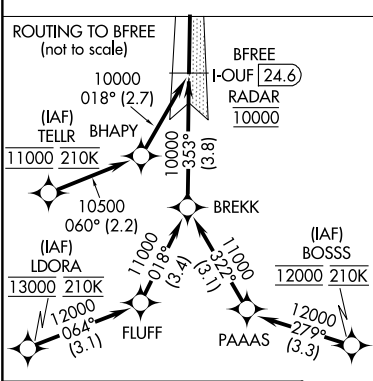
ILS RWY 34R (SA CAT I)
DENVER INTL (DEN)

Requires specific OPSPEC, MSPEC or LOA approval and use of HUD to DH. Simultaneous approach authorized with Rwy 35L/R.	ALSIF-2 	MISSED APPROACH: Climb to 5800 then climbing left turn to 10000 on heading 270° and on FQF VORTAC R-306 to HYGEN/FQF 37.9 DME/RADAR and hold.
--	-------------	---

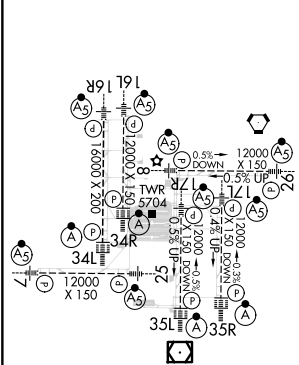
D-ATIS 125.6 379.9 (ARR) 134.025 (DEP)	DENVER APP CON 119.3 307.3 (N) 120.35 379.3 (S)	DENVER TOWER 135.3 351.95	GND CON 121.35 379.175 (W) 121.85 377.1 (E)	CLNC DEL 118.75	CPDLC
--	---	-------------------------------------	---	---------------------------	-------



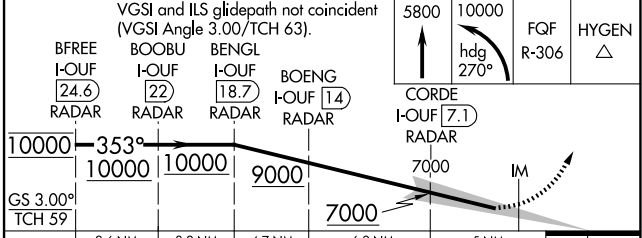
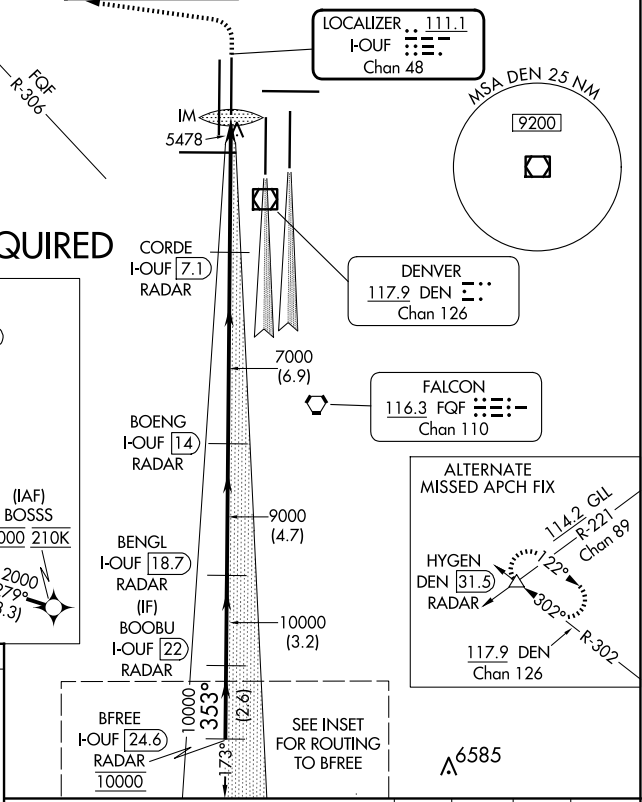
RADAR or GPS REQUIRED



ELEV 5434	D	TDZE 5354
-----------	---	-----------



HIRL all Rwy
TDZ/CL Rwy 7, 16L, 16R, 17R, 26, 34L, 34R, 35L, 35R



CATEGORY	A	B	C	D
S-ILS 34R	RA 175/14 150 DA 5504			
SA CATEGORY I ILS - SPECIAL AIRCREW & AIRCRAFT CERTIFICATION REQUIRED				

SW-1, 10 JUL 2025 to 07 AUG 2025

SW-1, 10 JUL 2025 to 07 AUG 2025