

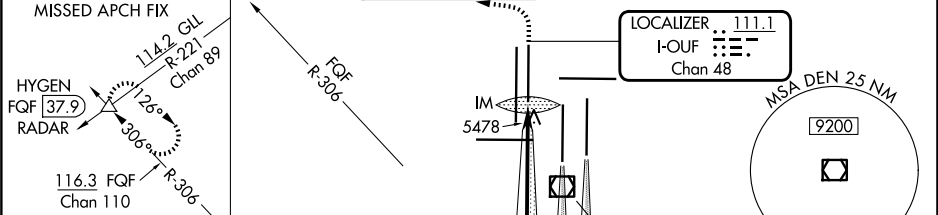
LOC/DME I-OUF <b>111.1</b> Chan <b>48</b>	APP CRS <b>353°</b>	Rwy Idg <b>12000</b> TDZE <b>5354</b> Apt Elev <b>5434</b>	ILS RWY 34R (CAT II & III) DENVER INTL (DEN)
---	------------------------	--	---

Simultaneous approach authorized with Rwy 35L/R.  
CAT II: RVR 1000 authorized with specific OPSPEC, MSPEC  
or LOA approval and use of autoland or HUD to touchdown.

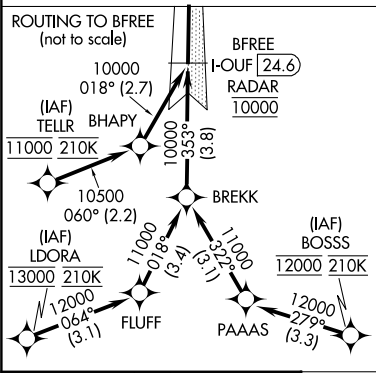
ALSF-2

MISSED APPROACH: Climb to 5800 then dimbing left  
turn to 10000 on heading 270° and on FQF VORTAC  
R-306 to HYGEN/FQF 37.9 DME/RADAR and hold.

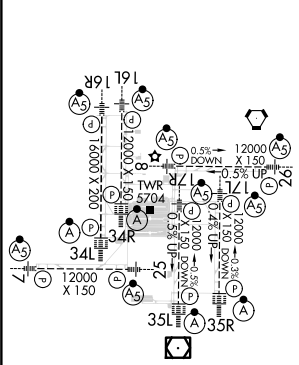
D-ATIS <b>125.6 379.9</b> (ARR) <b>134.025</b> (DEP)	DENVER APP CON <b>119.3 307.3</b> (N) <b>120.35 379.3</b> (S)	DENVER TOWER <b>135.3 351.95</b>	GND CON <b>121.35 379.175</b> (W) <b>121.85 377.1</b> (E)	CLNC DEL <b>118.75</b>	CPDLC
--	---	-------------------------------------	---	---------------------------	-------



RADAR or GPS REQUIRED



ELEV 5434	D	TDZE 5354
-----------	---	-----------



HIRL all Rwy  
TDZ/CL Rwy 7, 16L, 16R, 17R, 26, 34L,  
34R, 35L, 35R

VGSI and ILS glidepath not coincident (VGSI Angle 3.00/TCH 63).					
BFREE I-OUF 24.6 RADAR	BOOBU I-OUF 22 RADAR	BENGL I-OUF 18.7 RADAR	BOENG I-OUF 14 RADAR	CORDE I-OUF 7.1 RADAR	IM 5457
10000	10000	9000	7000	5800	
GS 3.00° TCH 59					
2.6 NM	3.2 NM	4.7 NM	6.9 NM	5 NM	1071'
CATEGORY	A	B	C	D	
S-ILS 34R	CAT II RA 155/12 100 DA 5454				
S-ILS 34R	CAT IIIa RVR 07				
S-ILS 34R	CAT IIIb RVR 03				
S-ILS 34R	CAT IIIc NA				

CATEGORY II & III ILS - SPECIAL AIRCREW  
& AIRCRAFT CERTIFICATION REQUIRED