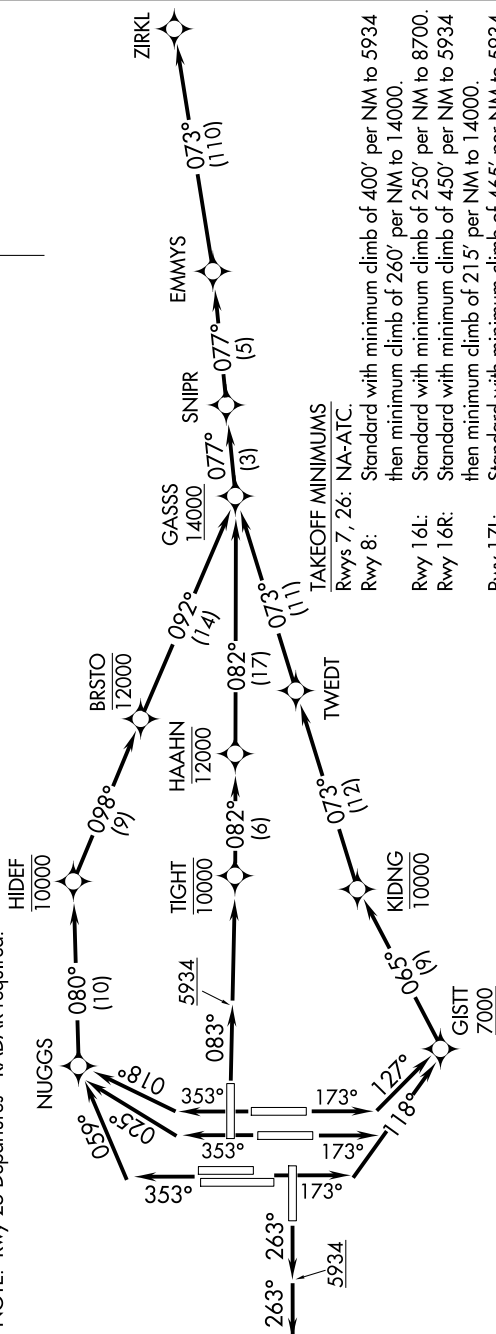


D-ATIS DEP	134.025
CLINC DEL	118.75
CPDLC	
DENVER DEP CON	128.25
	371.95

**TOP ALTITUDE:**  
**FL230**

NOTE: DME/DME/IRU or GPS required.  
RNAV 1.  
NOTE: Turboprops only.  
NOTE: Takeoff Rwy's 16L/R, 17L/R, 34L/R for non-GPS equipped aircraft.  
NOTE: Accelerate to 250K or greater upon required to meet crossing restrictions.  
NOTE: Rwy 25 Departures - RADAR required.



TAKEOFF MINIMUMS  
Rwys 7, 26: NA-ATC.

Rwy 8:	Standard with minimum climb of 400' per NM to 5934 then minimum climb of 260' per NM to 14000.
Rwy 16L:	Standard with minimum climb of 250' per NM to 8700.
Rwy 16R:	Standard with minimum climb of 450' per NM to 5934 then minimum climb of 215' per NM to 14000.
Rwy 17L:	Standard with minimum climb of 465' per NM to 5934 then minimum climb of 280' per NM to 9300.
Rwy 17R:	Standard with minimum climb of 465' per NM to 5934 then minimum climb of 235' per NM to 14000.
Rwy 25:	Standard with minimum climb of 400' per NM to 5934.
Rwys 34L/R:	Standard with minimum climb of 500' per NM to 5934 then minimum climb of 220' per NM to 14000.
Rwy 35L:	Standard with minimum climb of 320' per NM to 5934 then minimum climb of 220' per NM to 14000.
Rwy 35R:	Standard with minimum climb of 285' per NM to 9000.

(NARRATIVE ON FOLLOWING PAGE)

NOTE: Chart not to scale.

SW-1, 10 JUL 2025 to 07 AUG 2025

## EMMYS EIGHT DEPARTURE (RNAV)

(EMMYS8.ZIRKL) 17JUN21

DENVER, COLORADO

DENVER INTL (DEN)