

DDRTH ONE DEPARTURE (RNAV)

AL-9077 (FAA)

DENVER INTL (DEN)
DENVER, COLORADO

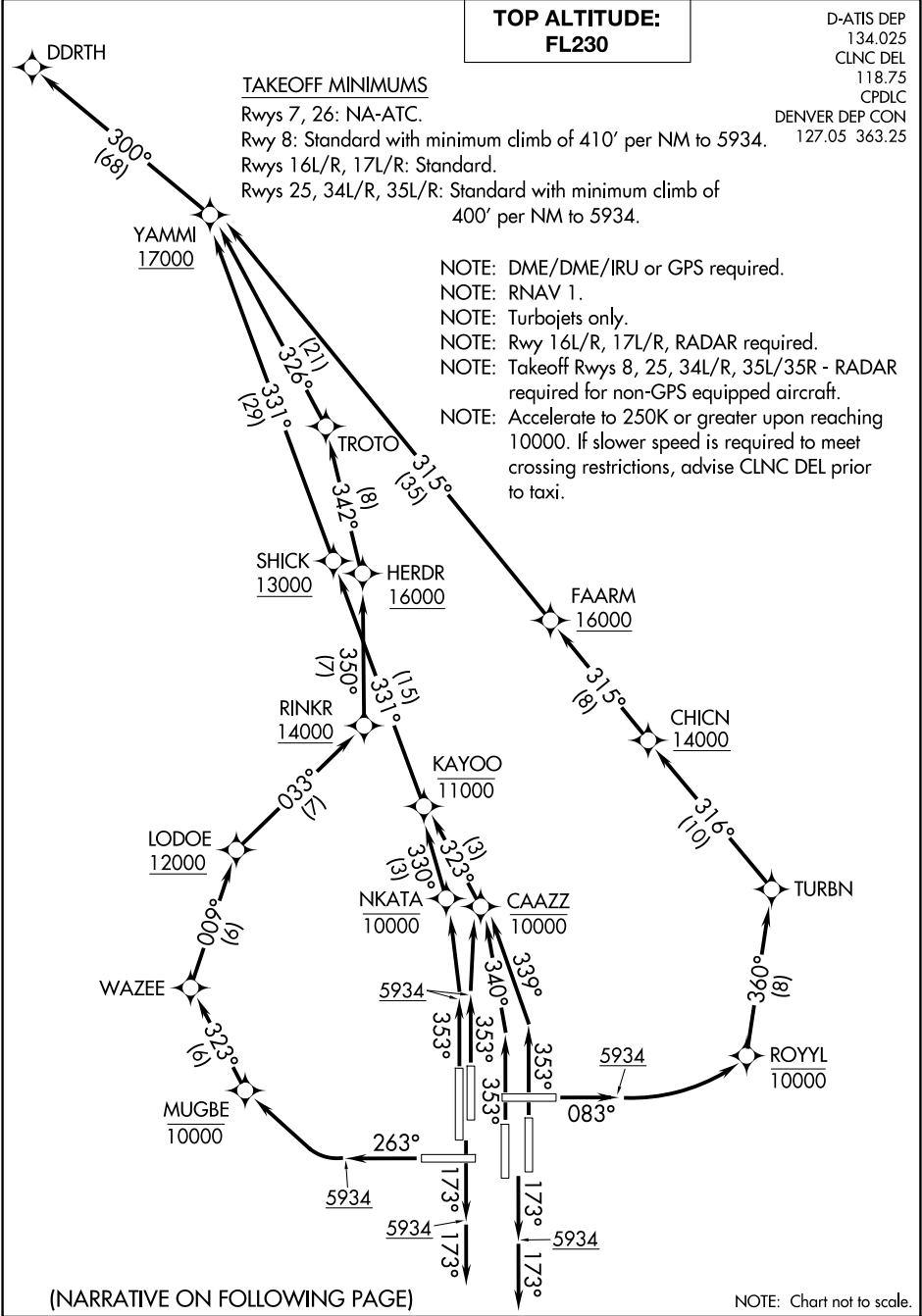
TOP ALTITUDE:
FL230

D-ATIS DEP 134.025
CLNC DEL 118.75
CPDLC
DENVER DEP CON 127.05 363.25

TAKEOFF MINIMUMS

Rwys 7, 26: NA-ATC.
Rwy 8: Standard with minimum climb of 410' per NM to 5934.
Rwys 16L/R, 17L/R: Standard.
Rwys 25, 34L/R, 35L/R: Standard with minimum climb of 400' per NM to 5934.

- NOTE: DME/DME/IRU or GPS required.
- NOTE: RNAV 1.
- NOTE: Turbojets only.
- NOTE: Rwy 16L/R, 17L/R, RADAR required.
- NOTE: Takeoff Rwys 8, 25, 34L/R, 35L/35R - RADAR required for non-GPS equipped aircraft.
- NOTE: Accelerate to 250K or greater upon reaching 10000. If slower speed is required to meet crossing restrictions, advise CLNC DEL prior to taxi.



(NARRATIVE ON FOLLOWING PAGE)

NOTE: Chart not to scale.

DDRTH ONE DEPARTURE (RNAV)