

## DENVER, COLORADO

128.75  
132.35 239.275 (Rwys)  
124.3 322  
135.3 351.95 (Rwys)

NOTE: Denver Center will issue "descend via" clearances and landing direction.

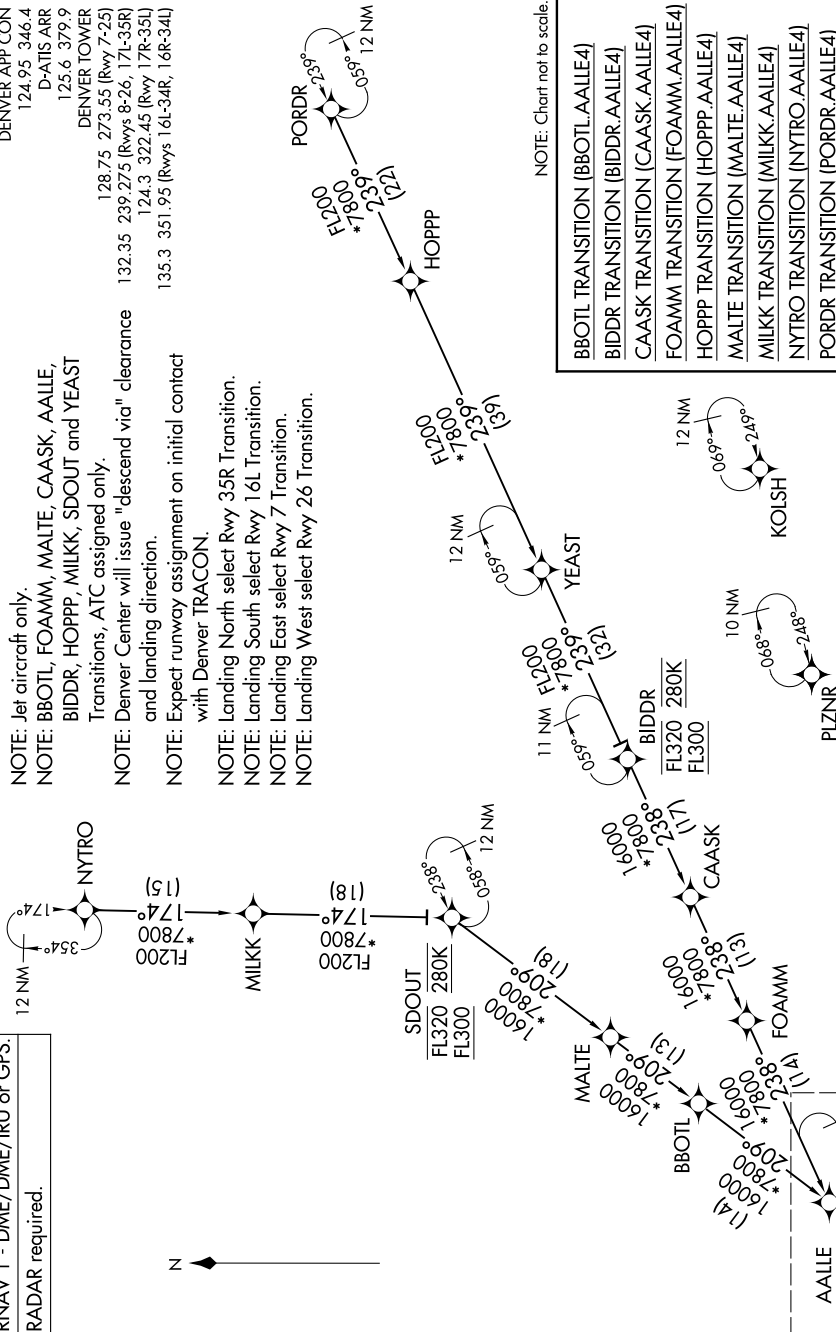
NOTE: Expect runway assignment on initial contact with Denver TRACON.

NOTE: Landing North select Rwy 35R Transition.

NOTE: Landing South select Rwy 16L Transition.

NOTE: Landing East select Rwy 7 Transition.

NOTE: Landing West select Rwy 26 Transition.



NOTE: Chart not to scale.

- BBOTL TRANSITION (BBOTL.AALIE4)  
 BIDD TRANSITION (BIDDR.AALIE4)  
 CAASK TRANSITION (CAASK.AALIE4)  
 FOAMM TRANSITION (FOAMM.AALIE4)  
 HOPPP TRANSITION (HOPPP.AALIE4)  
 MAALTE TRANSITION (MAALTE.AALIE4)  
 MILKK TRANSITION (MILKK.AALIE4)  
 NYTRO TRANSITION (NYTRO.AALIE4)  
 PORDR TRANSITION (PORDR.AALIE4)  
 SDOUT TRANSITION (SDOUT.AALIE4)  
 YEAST TRANSITION (YEAST.AALIE4)

(CONTINUED ON FOLLOWING PAGE)

SW-1, 10 JUL 2025 to 07 AUG 2025

DENVER, COLORADO  
DENVER INTL (DEN)

(AALLE.AALLE4) 12JUN25