

APP CRS
160°

Rwy Idg	6003
TDZE	2377
Apt Elev	2377

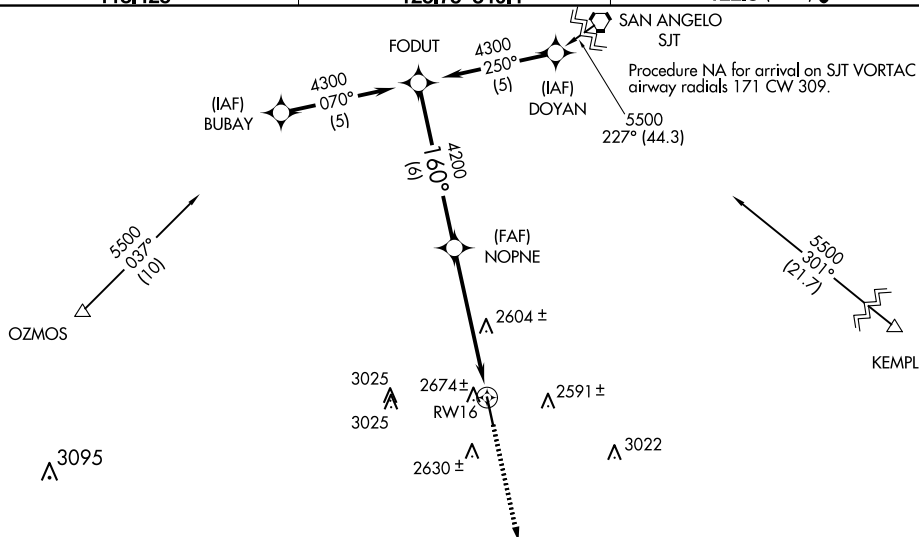
RNAV (GPS) RWY 16
OZONA MUNI (OZA)

GPS or RNP-0.3 required. DME/DME RNP-0.3 NA. Procedure NA at night.
Obtain local altimeter on CTAF; when not received, use San Angelo altimeter setting.
Rwy 16 helicopter visibility reduction below $\frac{3}{4}$ SM NA.

MISSED APPROACH: Climb to 5000 direct IXALE WP and hold.

AWOS-3PT
118.425

HOUSTON CENTER
125.75 346.4

UNICOM
122.8 (CTAF) **L**

ELEV 2377

TD7F 2377

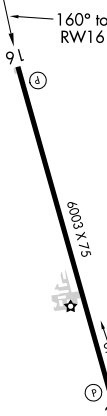


Diagram illustrating the San Angelo VOR/DME 113.1 MHz instrument approach. The diagram shows the glidepath, VOR/DME station, and runway. Key data points include:

- Procedure Turn NA**
- FODUT 4300**
- 160°**
- NOPNE 4200**
- 6 NM**
- 3.05° TCH 50**
- 3.9 NM**
- 1.6 NM**
- RW16**
- 5000**
- IXALE**
- VGS and RNAV glidepath not coincident (VGS Angle 3.00/TCH 39)**
- *VDP NA with San Angelo altimeter setting.**
- *1.6 NM to RW16**
- *1.6 NM**
- SAN ANGELO ALTITUDE SETTING MINIMUMS**

CATEGORY	A	B	C	D
RNAV MDA	2940-1¼	563 (600-1¼)	2940-1½ 563 (600-1½)	NA
CIRCLING	2980-1¼	603 (700-1¼)	2980-1¾ 603 (700-1¾)	NA
SAN ANGELO ALTITUDE SETTING MINIMUMS				
RNAV MDA	3180-1¼	803 (800-1¼)	3180-2¼ 803 (800-2¼)	NA
CIRCLING	3220-1¼	843 (900-1¼)	3220-2½ 843 (900-2½)	NA

OZONA, TEXAS
Orig-A 10SEP20

30°44'N-101°12'W

OZONA MUNI (OZA)
RNAV (GPS) RWY 16