

APP CRS  
101°

Rwy Idg  
TDZE  
Apt Elev

9550  
4112  
4113

RNAV (GPS) RWY 10

DONA ANA COUNTY INTL JETPORT (DNA)

▼

NA

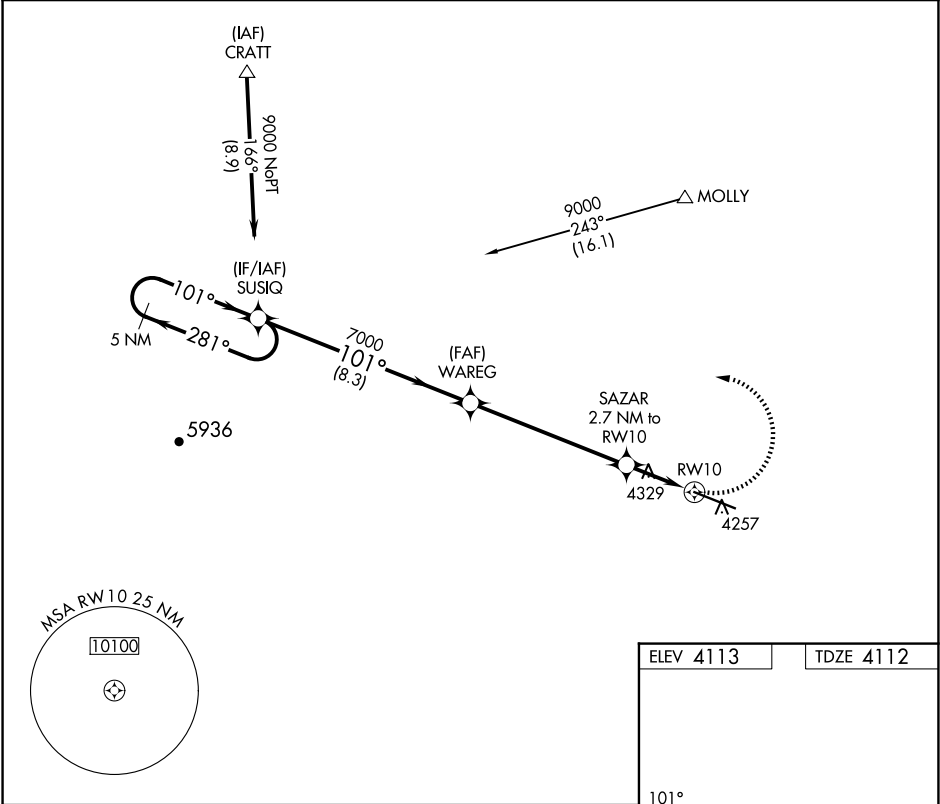
DME/DME RNP-0.3 NA. When local altimeter setting not received, use El Paso Intl altimeter setting.

MISSED APPROACH: Climbing left turn to 9000 direct SUSIQ and hold.

AWOS-3PT  
124.175

EL PASO APP CON  
119.15

AUNICOM  
122.725 (CTAF) 0



5 NM Holding Pattern

9000

281°

101°

SUSIQ

7000

101°

WAREG

3.07° TCH 43

SAZAR 2.7 NM to RW10

5000

2.7 NM

RW10

9000

SUSIQ

101°

9550 X 100

28

CATEGORY	A	B	C	D
LNAV MDA	4700-1	588 (600-1)	4700-1¾	588 (600-1¾)
CIRCLING	4760-1	647 (700-1)	4760-1¾ 647 (700-1¾)	4760-2 647 (700-2)

MIRL Rwy 10-28 0

REIL Rwy 10 and 28 0