

APP CRS
137°

Rwy Ldg
TDZE
6537

Apt Elev
6537

RNAV (GPS) RWY 13

GRANTS-MILAN MUNI (GNT)

RNP APCH-GPS.

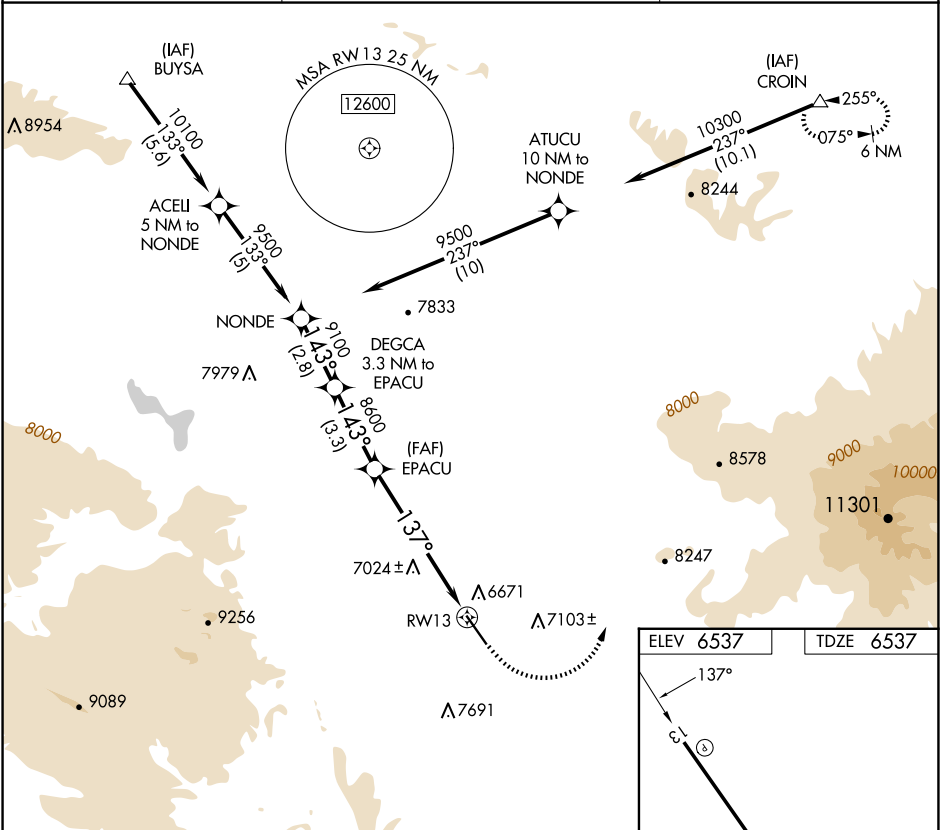
▼

NA

When local altimeter setting not received, procedure NA.
Rwy 13 helicopter visibility reduction below ¾ SM NA.

MISSED APPROACH: Climb to 8000, then climbing left turn to 10400 direct CROIN WP and hold.

AWOS-3PT 118.3	ALBUQUERQUE CENTER 124.325 288.25	UNICOM 122.8 (CTAF) 1
--------------------------	---	--



NONDE

VGSI and descent angles not coincident
(VGSI Angle 3.00/TCH 44).

8000

10400

CROIN

9500

143°

DECCA
3.3 NM to
EPACU

9100

137°

8600

3.05°
TCH 40

2.5 NM to
RWY 13

RWY 13

Procedure
Turn
NA

2.8 NM

3.3 NM

3.7 NM

2.5 NM

CATEGORY	A	B	C	D
LNAV MDA	7380-1 843 (900-1)	7380-1¼ 843 (900-1¼)	7380-2½ 843 (900-2½)	NA

MIRL Rwy 13-31 **1**