

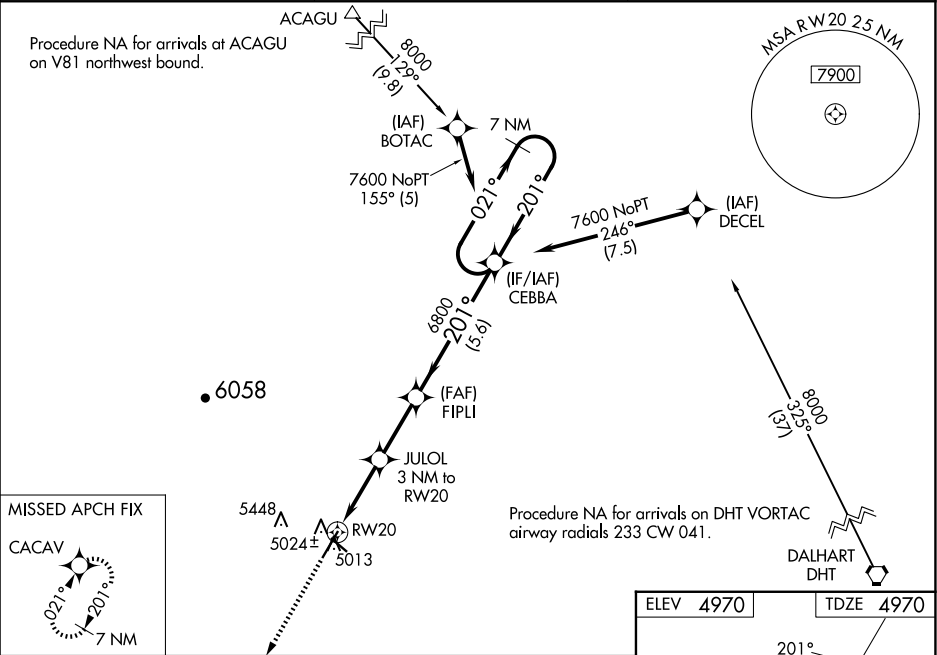
WAA5 CH 42833 W20A	APP CRS 201°	Rwy Idg TDZE Apt Elev 6307 4970 4970
--	------------------------	--

RNAV (GPS) RWY 20
CLAYTON MUNI AIRPARK (CAO)

⚠ For uncompensated Baro-VNAV systems, LNAV/VNAV NA below -16°C (4°F) or above 54°C (130°F). Circling NA west of Rwy 2-20. DME/DME RNP-0.3 NA. When local altimeter setting not received, use Dalhart altimeter setting and increase all DA 227 feet and all MDA 240 feet, increase LPV all Cats visibility 7⁄8 mile, increase LNAV/VNAV all Cats visibility 3⁄4 mile, increase LNAV Cat C visibility 5⁄8 mile, and increase circling Cat C visibility 1⁄4 mile. Baro-VNAV and VDP NA when using Dalhart altimeter setting.

MISSED APPROACH: Climb to 8000 direct CACAV and hold, continue climb-in-hold to 8000.

ASOS 120.625	ALBUQUERQUE CENTER 127.85 285.475	UNICOM 122.8 (CTAF) 0
------------------------	---	---------------------------------



8000 CACAV

*LNAV only.

*1.1 NM to RW20

JULOL 3 NM to RW20

FIPLI 6800

CEBBA 7 NM Holding Pattern

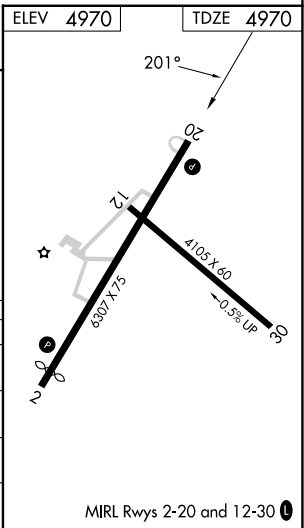
021° 7600

5960* 6800

GP 3.00° TCH 49

1.1 1.9 NM 2.6 NM 5.6 NM

CATEGORY	A	B	C	D
LPV DA	5220-3⁄4	250 (300-3⁄4)		NA
LNAV/VNAV DA	5300-1 1⁄8	330 (400-1 1⁄8)		NA
LNAV MDA	5360-1	390 (400-1)	5360-1 1⁄8 390 (400-1 1⁄8)	NA
CIRCLING	5360-1 390 (400-1)	5420-1 450 (500-1)	5420-1 1⁄2 450 (500-1 1⁄2)	NA



SW-1, 10 JUL 2025 to 07 AUG 2025

SW-1, 10 JUL 2025 to 07 AUG 2025