

WAAS CH 69233 W02A	APP CRS 021°	Rwy Idg TDZE Apt Elev	5917 4967 4970
--	------------------------	-----------------------------	---

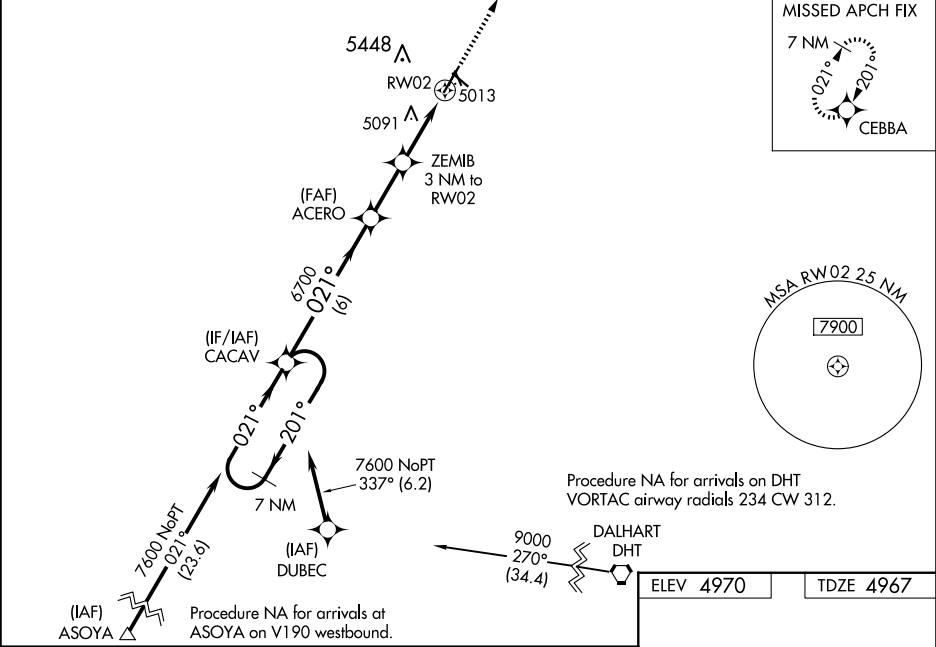
RNAV (GPS) RWY 2

CLAYTON MUNI AIRPARK (CAO)

⚠ For uncompensated Baro-VNAV systems, LNAV/VNAV NA below -1.6°C (4°F) or above 54°C (130°F). Circling NA west of Rwy 2-20. DME/DME RNP-0.3 NA. When local altimeter setting not received, use Dalhart altimeter setting and increase all DA 227 feet and all MDA 240 feet, increase LPV all Cats visibility $\frac{3}{8}$ mile, increase LNAV/VNAV all Cats visibility $\frac{1}{8}$ mile, increase LNAV Cat C visibility $\frac{5}{8}$ mile, and increase Circling Cat C visibility $\frac{1}{4}$ mile. Baro-VNAV NA when using Dalhart altimeter setting. VDP NA with Dalhart altimeter setting.

MISSED APPROACH: Climb to 8000 direct CEBBA and hold, continue climb-in-hold to 8000.

ASOS 120.625	ALBUQUERQUE CENTER 127.85 285.475	UNICOM 122.8 (CTAF) 0
------------------------	---	---------------------------------



7 NM Holding Pattern		CACAV	ACERO	ZEMIB 3 NM to RW02	*1.1 NM to RW02	RW02
7600		201°	021°	021°		
GP 3.00° TCH 49			6700	*5960		
		6 NM	2.3 NM	1.9 NM	1.1 NM	
CATEGORY	A	B	C	D		
LPV DA	5217- $\frac{3}{4}$		250 (300- $\frac{3}{4}$)	NA		
LNAV/VNAV DA	5367-1 $\frac{3}{8}$		400 (400-1 $\frac{3}{8}$)	NA		
LNAV MDA	5360-1	393 (400-1)	5360-1 $\frac{1}{8}$ 393 (400-1 $\frac{1}{8}$)	NA		
CIRCLING	5360-1 390 (400-1)	5420-1 450 (500-1)	5420-1 $\frac{1}{2}$ 450 (500-1 $\frac{1}{2}$)	NA		

