

WAAS CH 99541 W07A	APP CRS 067°	Rwy Ldg TDZE 5249 Apt Elev 5278
--	------------------------	---

RNAV (GPS) RWY 7

RANGELY (4VØ)

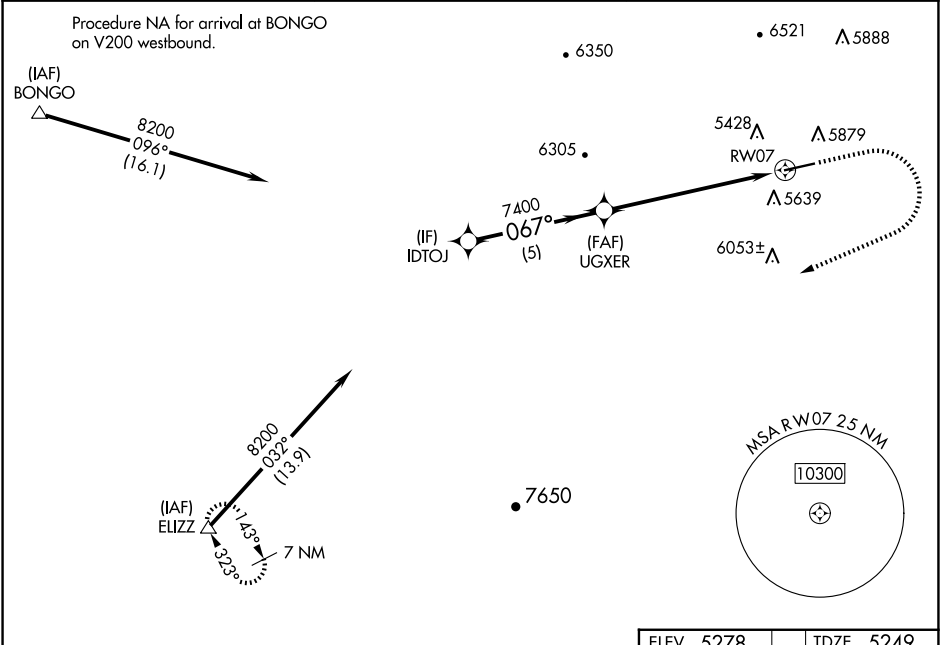
⚠

For uncompensated Baro-VNAV systems, LNAV/VNAV NA below -28°C (-18°F) or above 54°C (130°F). Circling Rwy 25 NA at night. DME/DME RNP-0.3 NA.

MISSED APPROACH: Climb to 5700 then climbing right turn to 10800 direct ELIZZ and hold.

Missed approach requires a minimum climb of 425 feet per NM to 8200 feet.

AWOS-3PT 119.025	DENVER CENTER 134.5 327.8	UNICOM 122.8 (CTAF) Ø
----------------------------	-------------------------------------	--



IDTOJ		UGXER		RWY 7	
8200		7400		5700	
GP 3.00°		*5.9 NM to RWY 7		10800	
TCH 40		* LNAV only.		ELIZZ	
5 NM		0.8 NM		5.9 NM	
CATEGORY	A	B	C	D	
LPV DA#	5599-1 350 (400-1)			NA	
LPV DA	6013-2½ 764 (800-2½)			NA	
LNAV/ VNAV DA	6041-2½ 792 (800-2½)			NA	
LNAV MDA	7180-1¼ 1931 (2000-1¼)	7180-1½ 1931 (2000-1½)	7180-3 1931 (2000-3)	NA	
CIRCLING	7180-1¼ 1902 (2000-1¼)	7180-1½ 1902 (2000-1½)	7180-3 1902 (2000-3)	NA	

ELEV 5278

TDZE 5249

MIRL Rwy 7-25 **Ø**
REIL Rwy 7 and 25 **Ø**

SW-1, 10 JUL 2025 to 07 AUG 2025

SW-1, 10 JUL 2025 to 07 AUG 2025