

| | | |
|---------|----------|------|
| APP CRS | Rwy Idg | 4002 |
| 181° | TDZE | 444 |
| | Apt Elev | 444 |

RNAV (GPS) RWY 18

BENTON MUNI (H96)

▼

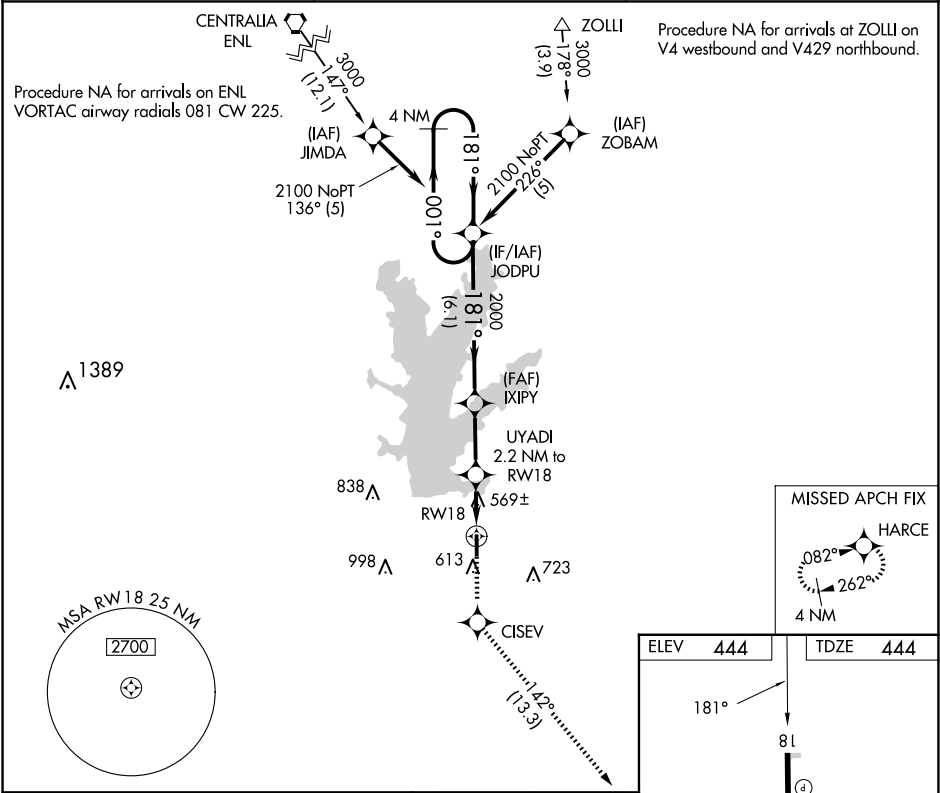
DME/DME RNP-0.3 NA. Rwy 18 helicopter visibility reduction below ¾ SM NA.

▲ NA

Use Marion altimeter setting; when not received, use Mount Vernon altimeter setting and increase all MDA 20 feet and increase LNAV Cat C visibility to 1¼ mile. Circling Rwy 36 NA at night.

MISSED APPROACH: Climb to 2100 direct CISEV and on track 142° to HARCE and hold.

| | | |
|-------------------------|---------------------------------------|--------------------------|
| MWA AWOS-3PT 119.675 | KANSAS CITY CENTER 127.475 346.275 | UNICOM 122.8 (CTAF) 0 |
|-------------------------|---------------------------------------|--------------------------|



4 NM Holding Pattern

VGSI and descent angles not coincident (VGSI Angle 3.33/TCH 45).

| | | | | | | | |
|--------|------|--------|------|--------|-------|---------|-------|
| 2100 | 001° | 181° | 181° | 2100 | CISEV | tr 142° | HARCE |
| | | | | | | | |
| 6.1 NM | | 2.6 NM | | 2.2 NM | | | |

| CATEGORY | A | B | C | D |
|----------|--------|-------------|------------------------|----|
| LNAV MDA | 860-1 | 416 (500-1) | 860-1½ 416 (500-1½) | NA |
| CIRCLING | 1000-1 | 556 (600-1) | 1120-2 676 (700-2) | NA |

REIL Rwy 18, 36
MIRL Rwy 18-36 0