

LOC/DME I-GAO

109.1

Chan 28

APP CRS

359°

Rwy ldg

6500

TDZE

-2

Apt Elev

0

ILS or LOC RWY 36

SOUTH LAFOURCHE LEONARD MILLER JR (GAO)

DME required.

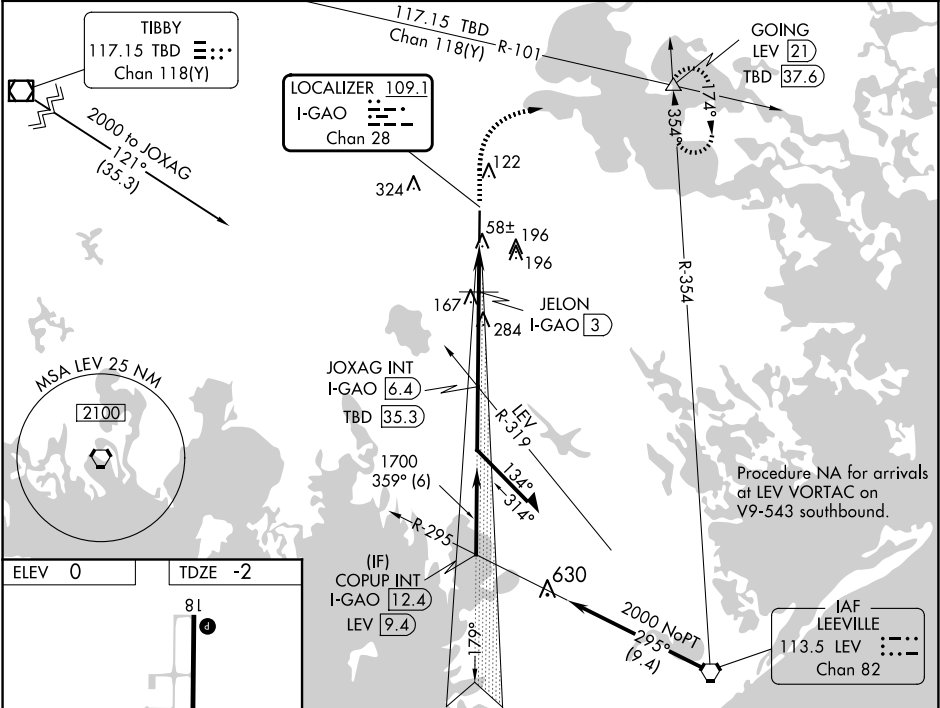
T

SSALR

A3

MISSED APPROACH: Climb to 1200, then climbing right turn to 2000 on heading 050° and TBD VOR/DME R-101 to GOING INT/LEV 21 DME and hold.

AWOS-3PT	NEW ORLEANS APP CON	CLNC DEL	UNICOM
118.175	120.85 256.9	120.85	123.0 (CTAF) 0



ELEV 0	TDZE -2	1200 2000				TBD R-101	GOING	JOXAG INT I-GAO 6.4	Remain within 10 NM
81		hdg 050°		179°		1700		2000	
36		*LOC only.		*I-GAO 2.1		JELON I-GAO 3		359°	
36		I-GAO 1.2		620*		1700		GS 3.00° TCH 51	
36		0.9 NM		0.9 NM		3.4 NM			
36		CATEGORY		A		B		C	
36		S-ILS 36		198-1/2		200 (200-1/2)			
36		S-LOC 36		320-1/2		322 (400-1/2)			
36		CIRCLING		440-1		560-1		640-1 3/4	
36				440 (500-1)		560 (600-1)		640 (700-2)	