

APP CRS  
305°

Rwy Idg  
TDZE  
Apt Elev

3704  
151  
151

RNAV (GPS) RWY 30

LIVINGSTON MUNI (00R)

RNP APCH-GPS.

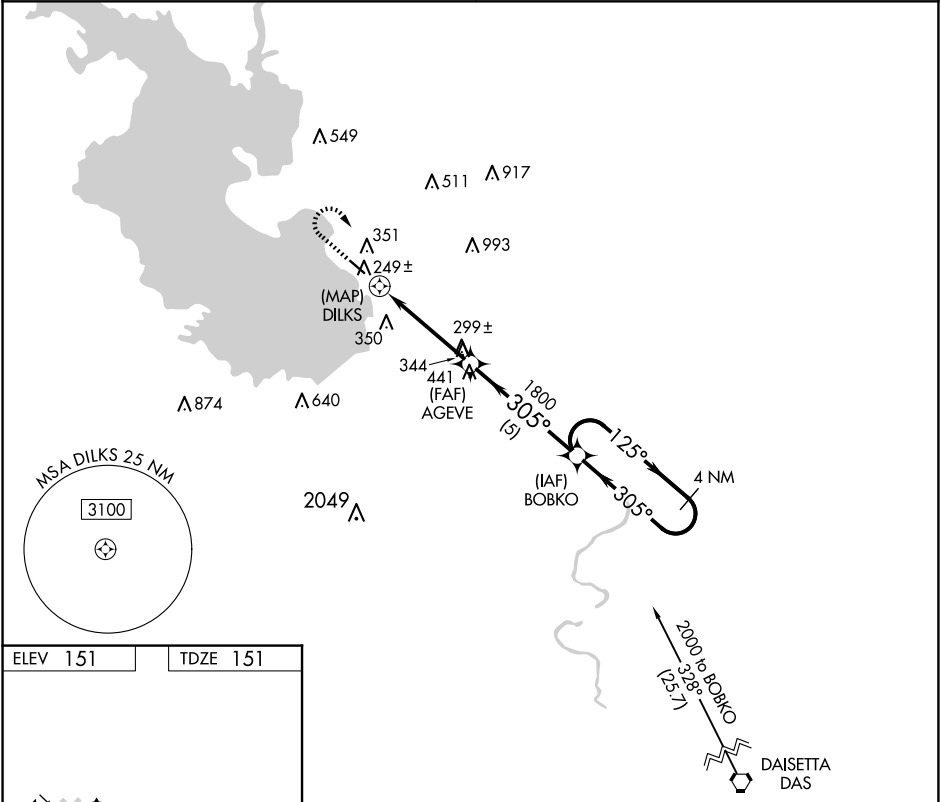
▼ Use Conroe/North Houston Rgnl altimeter setting: Rwy 30 helicopter

▲ NA visibility reduction below 1 SM NA. Night landing: Rwy 30 NA.

MISSED APPROACH: Climb to 1000 then climbing right turn to 2000 direct BOBK0 WP and hold.

HOUSTON CENTER  
125.175 285.575

UNICOM  
122.7 (CTAF)



ELEV 151

TDZE 151

1000

2000

BOBK0

Visual Segment - Obstacles.

AGEVE

BOBK0

4 NM Holding Pattern

DILKS

1800

305°

125°

2000

0.7

4.3 NM

5 NM

CATEGORY	A	B	C	D
LNAV MDA	680-1	529 (600-1)	680-1½ 529 (600-1½)	NA
CIRCLING	800-1	649 (700-1)	800-1¾ 649 (700-1¾)	NA