

APP CRS	Rwy Ldg	N/A
346°	TDZE	N/A
	Apt Elev	5055

RNAV (GPS)-B

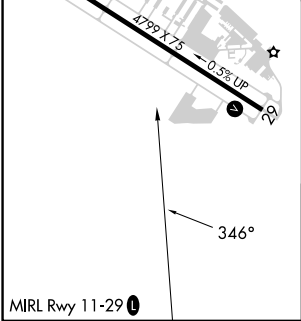
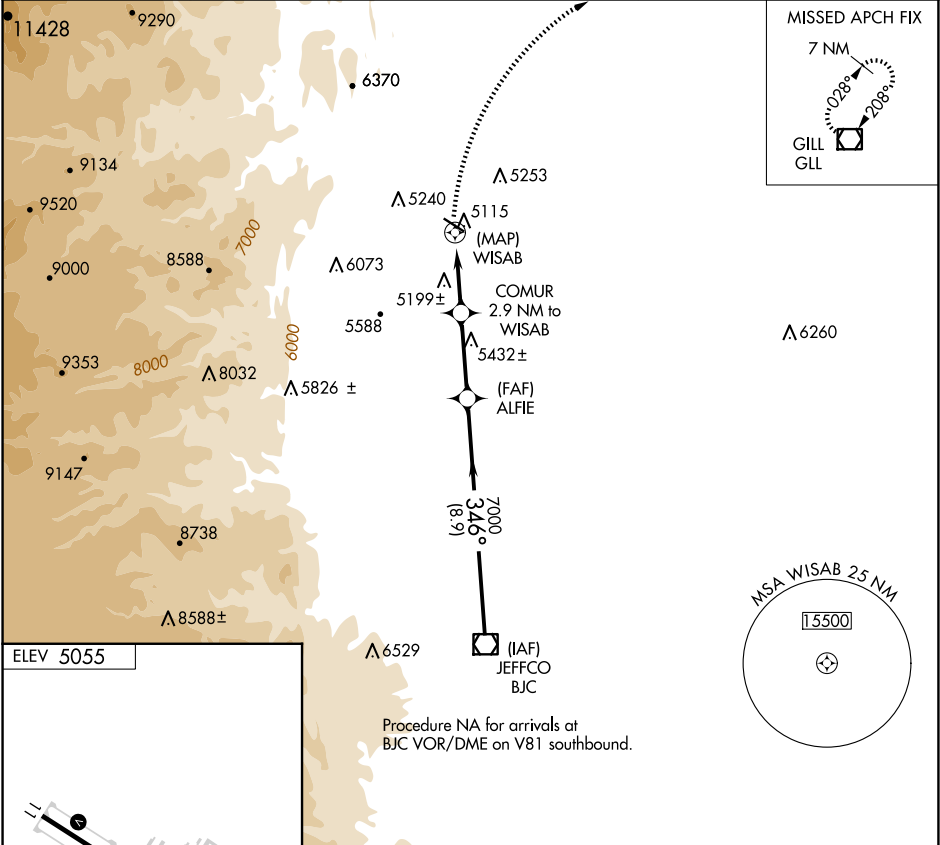
VANCE BRAND (LMO)

⚠

When local altimeter setting not received, use Denver Intl altimeter setting and increase all MDA 120 feet; and increase Cat C/D visibility ¼ mile.  
DME/DME RNP-0.3 NA. Visibility reduction by helicopters NA.

MISSED APPROACH: Climbing right turn to 7200 direct GLL VOR/DME and hold.

AWOS-3 120.0	DENVER APP CON 125.12 263.02	UNICOM 122.975 (CTAF) 0
-----------------	---------------------------------	----------------------------



7200	GLL	COMUR 2.9 NM to WISAB	ALFIE	BJC VOR/DME
				9200
		6020	7000	
		2.9 NM	3.1 NM	8.9 NM
CATEGORY	A	B	C	D
CIRCLING	5560-1 505 (600-1)	5580-1 525 (600-1)	5880-2½ 825 (900-2½)	6500-3 1445 (1500-3)

SW-1, 10 JUL 2025 to 07 AUG 2025

SW-1, 10 JUL 2025 to 07 AUG 2025