

LONGMONT, COLORADO

AL-9041 (FAA)

25163

WAAS CH <b>86834</b> <b>W29A</b>	APP CRS <b>293°</b>	Rwy Ldg <b>4799</b> TDZE <b>5047</b> Apt Elev <b>5055</b>
--	------------------------	---

RNAV (GPS) RWY 29  
VANCE BRAND (LMO)

RNP APCH.



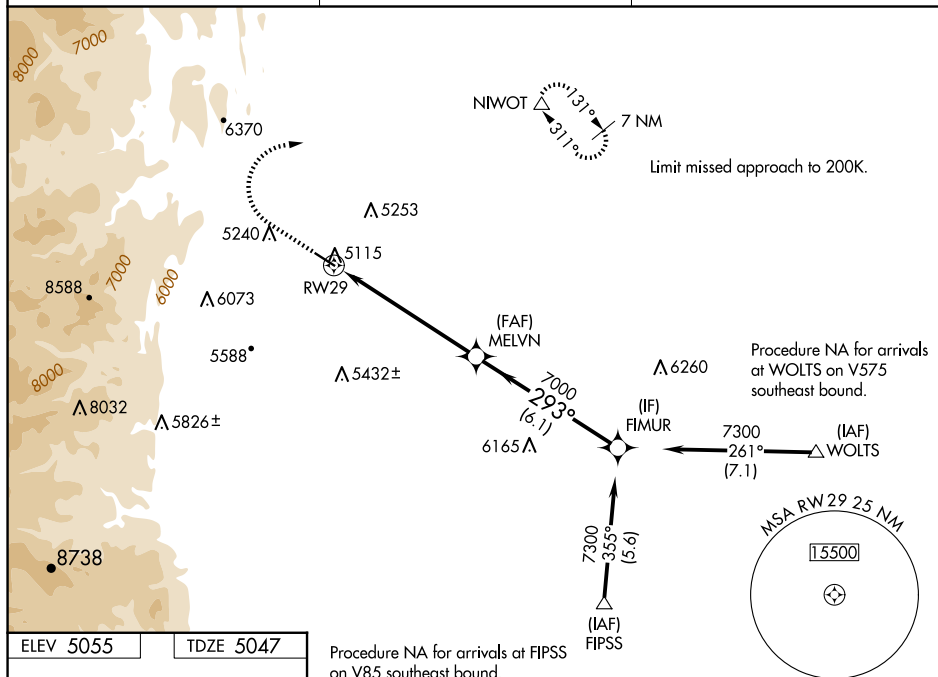
For uncompensated Baro-VNAV systems, procedure NA below -25°C or above 54°C.

**MISSED APPROACH:** Climb to 5540 then climbing right turn to 7400 direct NIWOT and hold, continue climb-in-hold to 7400.

AWOS-3  
120.0

DENVER APP CON  
125.12 263.02

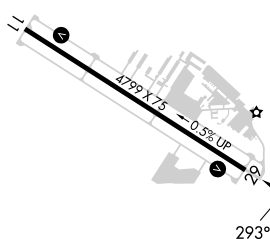
UNICOM  
122.975 (CTAF) 



ELEV 5055

TDZE 5047

### Procedure NA for arrivals at FIPSS on V85 southeast bound.

MIRL Rwy 11-29 **L**

LONGMONT, COLORADO

Amdt 2B 12AUG21

40°10'N-105°10'W

VANCE BRAND (LMO)

## RNAV (GPS) RWY 29

Diagram illustrating a 4-segment RNAV approach. The approach is labeled "RW29" and "MELVN". The approach is labeled "GP 3.00° TCH 35". The approach is labeled "LNNAV only".

Segment	Distance (NM)	Altitude (ft)
Segment A	2.3	5540 to 7400
Segment B	3.8	7400 to 7000
Segment C	6.1	7000 to 7300
Final Segment	-	7300

SW-1, 10 JUL 2025 to 07 AUG 2025