

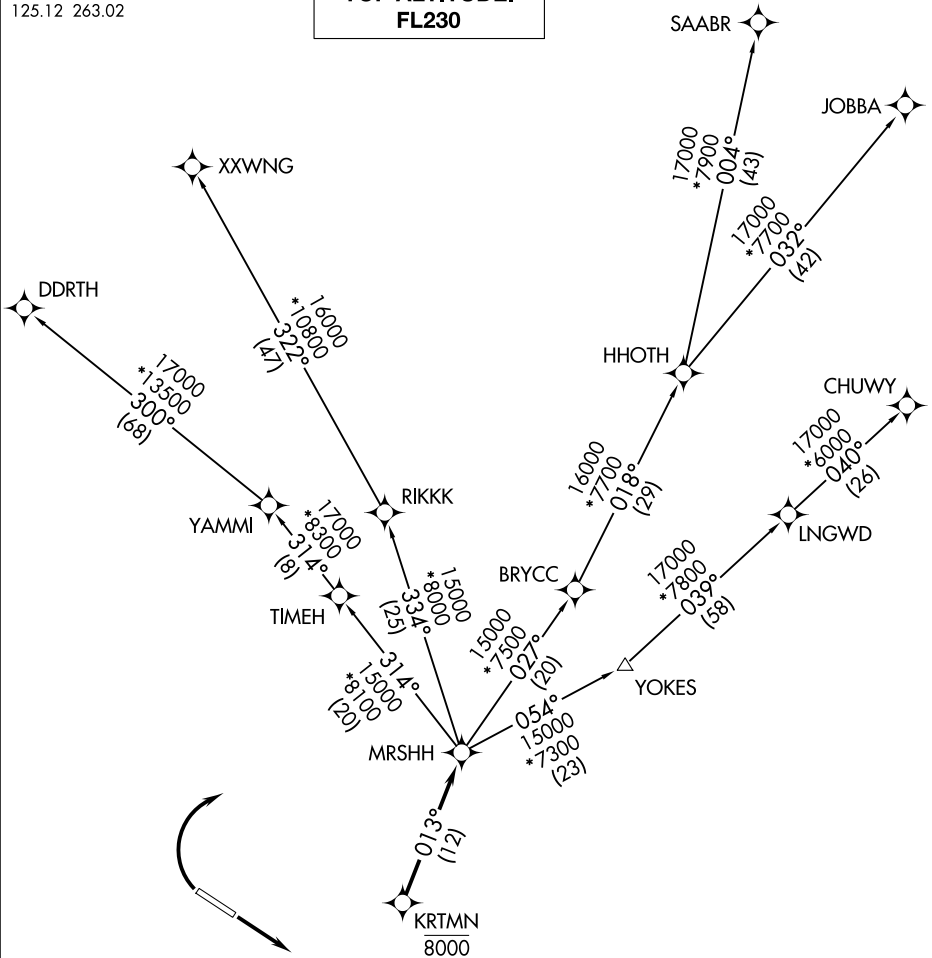
MRSHH TWO DEPARTURE (RNAV)

AL-9041 (FAA)

VANCE BRAND (LMO)  
LONGMONT, COLORADO

DENVER DEP CON  
125.12 263.02

**TOP ALTITUDE:**  
**FL230**



## TAKEOFF MINIMUMS

Rwy 11: Standard.

Rwy 29: Standard with minimum climb of 370' per NM to 8000.

NOTE: DME/DME/IRU or GPS required.

NOTE: RNAV 1.

NOTE: Turbojets only.

NOTE: RADAR required.

NOTE: Chart not to scale.

(NARRATIVE ON FOLLOWING PAGE)

MRSHH TWO DEPARTURE (RNAV)

(MRSHH2.MRSHH) 31DEC20

LONGMONT, COLORADO  
VANCE BRAND (LMO)

SW-1, 10 JUL 2025 to 07 AUG 2025