

WAAS CH <b>87041</b> <b>W35A</b>	APP CRS <b>352°</b>	Rwy Idg TDZE <b>3653</b> Apt Elev <b>3677</b>
--	------------------------	---

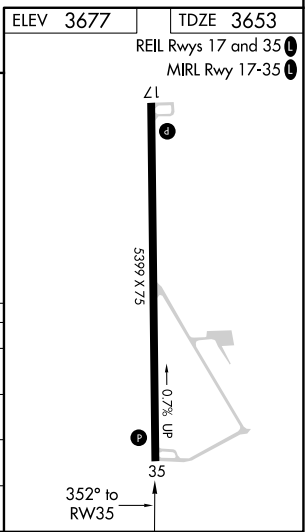
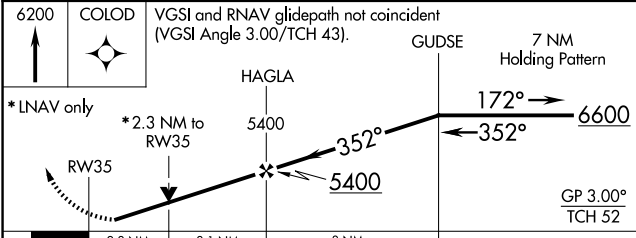
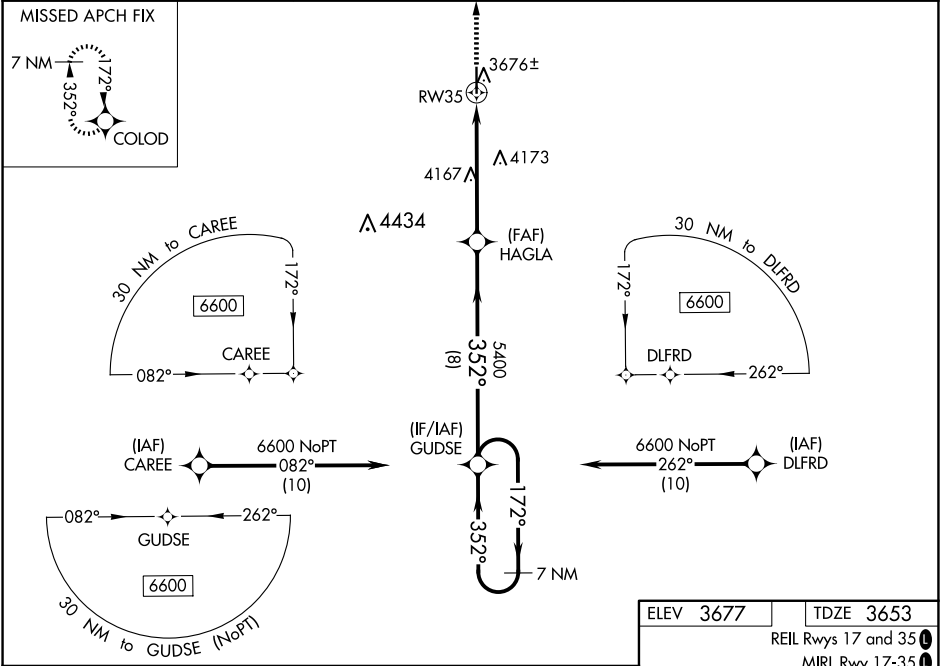
RNAV (GPS) RWY 35

WRAY MUNI (2V5)

**⚠** For uncompensated Baro-VNAV systems, LNAV/VNAV NA below -22°C (-7°F) or above 53°C (127°F). Baro-VNAV and VDP NA when using Imperial altimeter setting. Rwy 35 helicopter visibility reduction below ¾ SM NA. DME/DME RNP-0.3 NA. When local altimeter setting is not received use Imperial altimeter setting: increase LPV DA to 4047 and visibility to 1½ SM and LNAV/VNAV DA to 4088 and visibility to 1½ SM; increase all MDAs 140 feet and visibility Cats A, D ½ SM, Cat C ½ SM.

MISSED APPROACH: Climb to 6200 direct COLOD and hold.

AWOS-3 <b>118.25</b>	DENVER CENTER <b>132.7 226.675</b>	UNICOM <b>122.8 (CTAF) 0</b>
-------------------------	---------------------------------------	---------------------------------



CATEGORY	A	B	C	D
LPV DA	3903-1 250 (300-1)			
LNAV/VNAV DA	3945-1 292 (300-1)			
LNAV MDA	4420-1 767 (800-1)	4420-1¼ 767 (800-1¼)	4420-2½ 767 (800-2½)	4420-2¾ 767 (800-2¾)
<b>C</b> CIRCLING	4420-1 743 (800-1)	4420-1¼ 743 (800-1¼)	4540-2½ 863 (900-2½)	4540-2¾ 863 (900-2¾)