

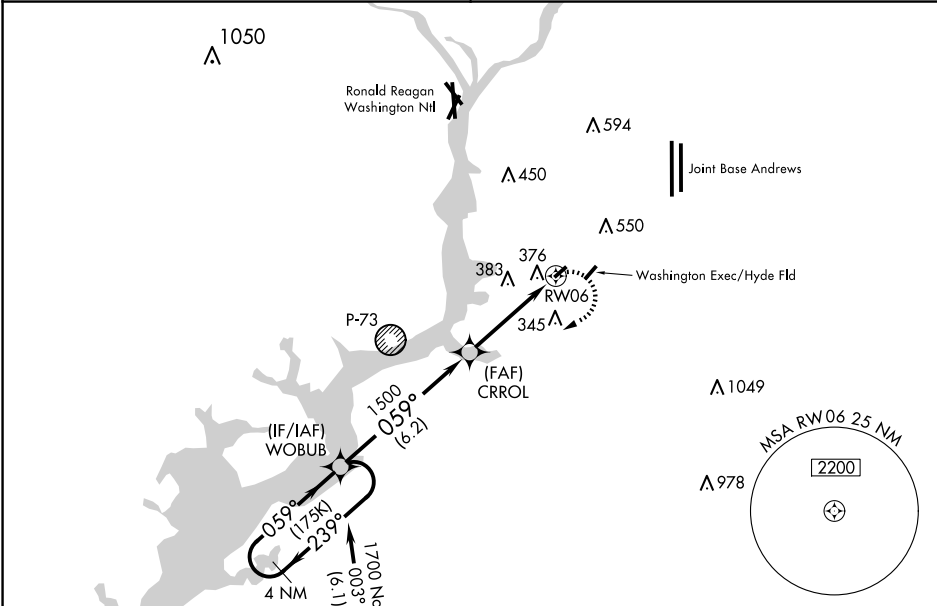
APP CRS	Rwy Idg	2289
059°	TDZE	118
	Apt Elev	118

RNAV (GPS) RWY 6

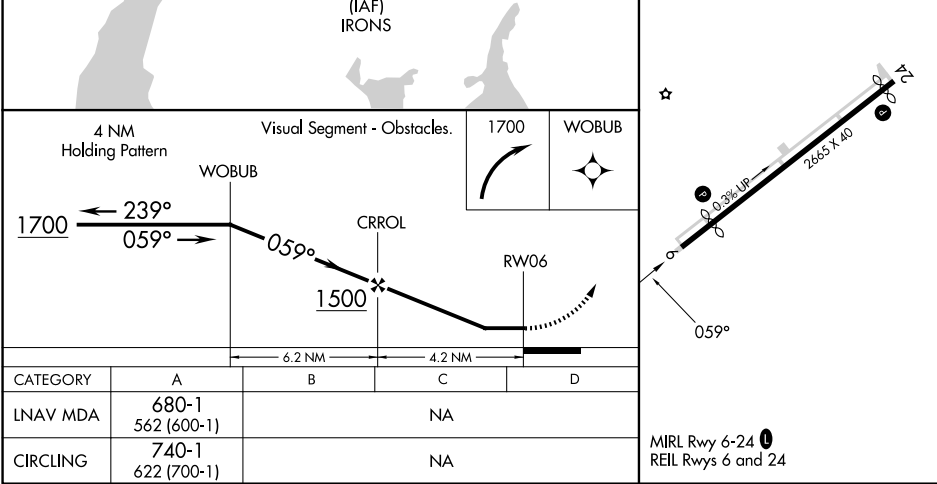
POTOMAC AIRFIELD (VKX)

RNP APCH - GPS.	
<div><div>▽</div><div>NA</div></div>	Circling NA SE of Rwy 6-24. Circling Rwy 24 NA at night. If local altimeter setting not received, use Joint Base Andrews altimeter setting and increase all MDAs 40 feet. Rwy 6 helicopter visibility reduction below 1 SM NA.
MISSED APPROACH: Climbing right turn to 1700 direct WOBUB and hold.	

POTOMAC APP CON	UNICOM
124.7 338.2	122.8 (CTAF) 0



ELEV 118	TDZE 118
----------	----------



NE-3, 10 JUL 2025 to 07 AUG 2025

NE-3, 10 JUL 2025 to 07 AUG 2025