

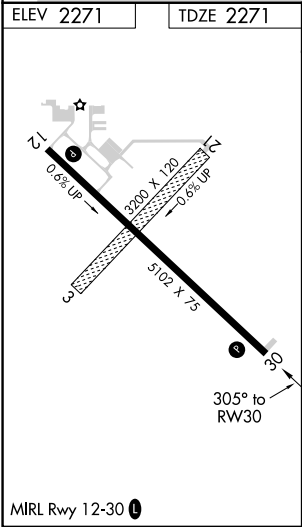
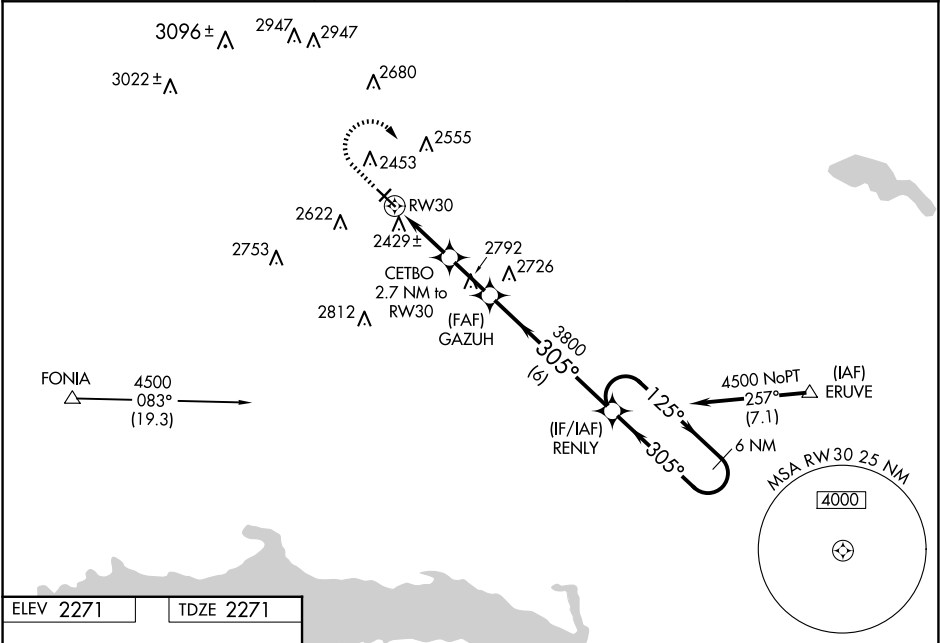
WAAS CH 56630 W30A	APP CRS 305°	Rwy Idg TDZE 5102 Apt Elev 2271
--	------------------------	---

RNAV (GPS) RWY 30

TIOGA MUNI (D60)

RNP APCH.		MISSED APPROACH: Climb to 3200 then climbing right turn to 4500 direct RENLY and hold.
	For uncompensated Baro-VNAV systems, LNAV/VNAV NA below -19°C or above 54°C. Rwy 30 helicopter visibility reduction below 3/4 SM NA. Circling NA to Rwys 3 and 21.	

AWOS-3 118.575	MINNEAPOLIS CENTER 127.6 279.6	CTAF 122.9 0
--------------------------	--	------------------------



3200	4500	RENLY	VGSI and RNAV glidepath not coincident (VGSI Angle 3.00/TCH 25).	
			RENLY 6 NM Holding Pattern	
*LNAV only		GAZUH	RENLY	4500
CETBO 2.7 NM to RW30		3800	305°	125°
RW30		3160*	3800	GP 3.00° TCH 40
2.7 NM		2 NM	6 NM	
CATEGORY	A	B	C	D
LPV DA	2521-1 250 (300-1)			
LNAV/VNAV DA	2712-1 3/8 441 (500-1 3/8)			
LNAV MDA	2720-1	449 (500-1)	2720-1 3/8	449 (500-1 3/8)
CIRCLING	2820-1 549 (600-1)	2980-1 709 (800-1)	2980-2 709 (800-2)	3000-2 1/4 729 (800-2 1/4)

NC-1, 10 JUL 2025 to 07 AUG 2025

NC-1, 10 JUL 2025 to 07 AUG 2025